



Tree care

**SENEBOGEN**



**THE BENCH-  
MARK FOR  
EFFICIENT  
TREE FELLING**

**TREE CARE HANDLER**



15 – 23 m



# CONTENTS



## OUR TREE CARE HANDLERS

- 10 BENEFITS >
- 22 PRODUCT OVERVIEW >
- 40 TECHNICAL DATA >

- 46 VERSATILITY FOR FELLING AND FORESTRY >
- 48 ABOUT SENNEBOGEN >
- 52 SERVICE UND TRAINING >

Information and jobsite reports on the topic of tree care and felling can also be found at

→ [www.sennebogen.com](http://www.sennebogen.com)



## THE RIGHT MACHINE FOR EVERY APPLICATION

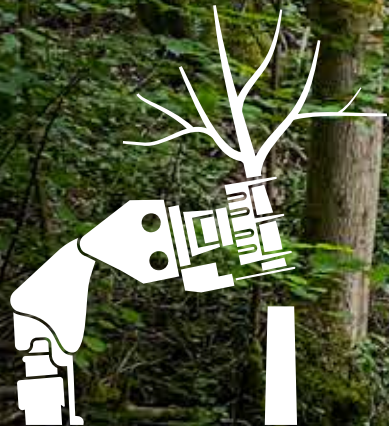
## MOVE BIG THINGS





# PRECISION FELLING WITH FULL SAFETY

ADDITIONAL  
HYDRAULIC PUMP FOR  
THE ATTACHMENT



## SAFE

With our tree care handlers, you work safely and with full control – thanks to a robust design, precise controls, and optimal all-around visibility from the elevating cab. In challenging environments, state-of-the-art technology ensures that every cut is executed safely and reliably.

## EFFICIENT

SENNEBOGEN tree care handlers combine powerful hydraulics with smart engineering to fell trees quickly, precisely, and with minimal effort – ensuring maximum productivity in every operation.


## VERSATILE

Whether in energy wood harvesting, roadside clearing, or forestry – SENNEBOGEN tree care handlers impress with versatile attachments and flexible mobility, adapting to any challenge.

## HIGHLY PROFITABLE

With high cutting performance, low fuel consumption, and durable components, SENNEBOGEN tree care handlers provide an efficient solution for timber harvesting that reduces operating costs and boosts productivity.



A green SENEBOGEN tree care handler is shown in a forest setting, lifting a large log. The machine is positioned on a dirt path, and its long, articulated arm is extended upwards, holding the log. The background is filled with dense green foliage and trees.

# CONCEPT OF THE TREE CARE HANDLER.

Where safety takes priority and efficiency makes the difference.

## SAFE OPERATION, FULL CONTROL

Every year, numerous workplace accidents occur during felling operations, leading to extended downtimes or serious injuries. The use of tree care handlers significantly reduces these risks, as operators work from a protected cabin equipped with comprehensive safety features.

## MORE POWER FOR EVERY ATTACHMENT

An additional hydraulic pump increases the performance of the attachment, enabling faster and more efficient work processes. This results in optimized operating time and enhanced productivity.

## MAXIMUM OUTPUT, MINIMAL EFFORT

Tree care handlers allow tasks to be completed in less time, significantly increasing efficiency. Shorter operating times can provide a decisive advantage in tenders.

## ONE MACHINE – COUNTLESS POSSIBILITIES

Tree care handlers are traditionally used with grab saws, but their wide range of applications is made possible through various attachments. The optional quick coupler system allows for easy and fast attachment changes, ensuring continuous operation throughout the year.





**718E 728E** CRAWLER  
Your machine  
for challenging terrain.



# 01 FOCUS ON SAFETY

Thanks to sophisticated features, SENNEBOGEN tree care handlers offer maximum safety inside and outside the cab.



„Workplace safety is our top priority: we offer a wide range of machine features to protect you in your daily tasks. Whether full protective grids or various support options such as outrigger systems, we equip you for any situation.“

MATTHIAS ÜBELACKER  
Director Business Unit Timber

GUARDS ON PISTON  
RODS AND CYLINDERS

OVERLOAD DISPLAY

RAILINGS, GRAB HANDLES  
AND NON-SLIP STEPS

PROTECTIVE ROOF AND  
FRONT GUARD & OPTI-  
ONAL BULLET PROOF  
GLASS

ELEVATING CAB  
TILTABLE UP TO  
**30 %**

VARIOUS POSSIBILI-  
TIES LIKE 2-POINT-  
OUTRIGGERS WITH  
STABILIZER BLADE





## 02 MODULAR DESIGN- VERSATILE SOLUTIONS



### SPECIAL REQUIREMENTS? WE HAVE THE SOLUTION.

With the tried-and-tested SENNEBOGEN modular system, we create the machine that suits you best - perfectly tailored to your application.

- /// We have already equipped your basic machine according to the required standards.
- /// You can choose between different equipment depending on the desired application area and the required reach height.
- /// With additional options such as a quick coupler system, safety glazing, or an elevating cab, you get exactly the tree care handler you need.

## POSSIBLE EQUIPMENT CONFIGURATIONS

### EQUIPMENT

Grab saw



Timber grab



Pruning shears



Mulcher



Cutting unit



Harvester unit



### CAB



E270 (elevating)



E270 (elevating) + 30° tilt

### UNDERCARRIAGE



Mobile, 4-point outriggers



Mobile, 2-point outriggers with stabilizer blade



Crawler

Dimensions in [mm]



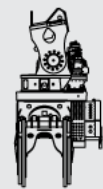
# 03 FLEXIBLE AND VERSATILE

## FLEXIBLE USE OF ATTACHMENTS TO ENSURE FULL-YEAR OPERATION

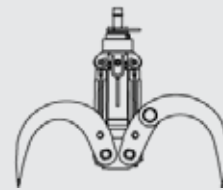
Do you already have one or more attachments? The SENNEBOGEN tree care handlers adapt to your requirements and, with their powerful performance, are suitable for a wide range of attachments.

In many cases, you only need one machine for multiple applications – saving on transport costs and reducing emissions.

The attachments shown are examples of possible options. The selection is made by the customer.



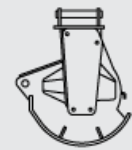
Grab saw



Timber grab



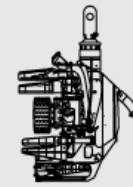
Pruning shears



Mulcher



Cutting unit



Harvester unit



728 E with WESTTECH Woodcracker C300

© WESTTECH Maschinenbau GmbH



718 E with Fencon Mulcher

## QUICK COUPLER: CHANGE ATTACHMENTS IN NO TIME



Memory function for up to three attachments

You can use a wide range of attachments. With our advanced quick coupler system, switching attachments takes just a few minutes and can be done with simple steps. The integrated memory function allows, for example, hydraulic pressure and flow rate settings for up to three attachments to be saved and immediately retrieved after switching.



\*optional equipment



718 E with VOSCH Stump Grinder



## 04 QUALITY IN SERIES FOR DEMANDING TASKS



### SOPHISTICATED, STATE-OF-THE-ART TECHNOLOGY

- /// In the 5th generation - decades of experience in designing and constructing material handlers

### LONG SERVICE LIFE, HIGH VALUE RETENTION

- /// Reliable and powerful thanks to its robust construction and high-quality components.
- /// Temperature-controlled cooling system, designed and tested for heavy-duty applications and high ambient temperature

### SIMPLE TO MAINTAIN AND SERVICE

- /// Technology that can be mastered and no over-engineering, easy accessibility to all components

### ENVIRONMENTALLY-FRIENDLY DRIVE TECHNOLOGY



- /// State-of-the-art engine, drive and emission systems in line with the latest technology standards (stage V)
- /// Large-scale pipes and valves for maximum efficiency

## 05 MAINTENANCE AND SERVICE MADE EASY



## KEEP IT SIMPLE. WITH MANAGEABLE TECHNOLOGY.

All service points are clearly arranged and easily accessible. The SENCON control system supports you with diagnostics. So your machine is back in action more quickly.



Reliable and practical technology



Stay independent and easily take care of your machine yourself



A central electrical distribution board and electronic modules simplify maintenance



# 06 DRIVING POSITION: BETTER SAFETY. MAXIMUM COMFORT.



## Everything in view

Excellent all-round view and upward visibility. Safety thanks to roof and protective guard and optional bullet proof glass. The tilt adjustment by up to 30° and the cab elevation provide an optimal overview over the working area.

## Intuitive controls

The intuitive **SENCON** control system shows all relevant information and possibilities for action and thus actively supports you in your work with the machine.

## For your health

The back-friendly comfort seat, adjustable armrests, joysticks that sit comfortably in the hand, and the optimally arranged controls and noise reduction make daily work as easy as possible. The automatic heating/air conditioning with optimum air flow guarantees a pleasant indoor climate all year round.

## COMFORT-AUDIO-SYSTEM

**SENNEBOGEN** 

The SENNEBOGEN Comfort Audio System provides the solution to a problem we face every day: noise. Through its advanced active noise-cancelling technology, harmful noise can be reduced by up to 50%, while also offering a high-quality communication system.

### ACTIVE NOISE-CANCELLING

OPTIONAL

- Quieter working conditions for the operator, improving work safety and quality of life
- Promotes better health by reducing engine noise up to 50 %

### WIRELESS RADIO MODULE

- Complete freedom of action for the operator: radio communication via button on the joystick
- Maximum convenience: no handset required
- Available radio options: CB and business radio from Motorola, Kenwood, iCom, Midland, Stabo, 3M Peltor

### EASY INSTALLATION

- Refitting via plug & play
- Installation on the already present headrest
- Customised switch and joystick assignment

### SENNEBOGEN FORESTRY / SAFETY HELMET INCL. HEARING PROTECTION

OPTIONAL

Communication solution with 3M Peltor Radio system can be retrofitted



### HANDS-FREE KIT

- Provides maximum safety for communication while operating the machine
- Multiple microphones for clear conversations
- Noise cancellation for high sound quality

### PREMIUM ENTERTAINMENT

- Includes Bluetooth function for easy pairing with smartphones
- Existing vehicle radio can be integrated; adaptive volume adjustment for incoming radio signals
- High class sound experience thanks to surround sound

FOCUS ON THE OPERATOR

PLUG & PLAY SOLUTION at plant





# 07 PRACTICAL TRANSPORT

Transport your tree care handler quickly and cost-effectively on a flatbed trailer from site to site – or drive short distances on its own axles for easy location changes.



## Compact

Low transport widths and weights guarantee cost-effective transport.



## Cost-efficient

All machines can be transported on a low-loader.



## Saves time

After relocating, your tree care handler is ready for operation again with just a few simple steps.








OPTION: TRANSPORT LOCK FOR THE GRAB SAW





THE PERFECT SOLUTION FOR  
EVERY TREE CARE HANDLER  
APPLICATION.

<div></div> <div></div> <div></div> <div></div>				
	718E	718E	728E	728E
	21.4 t	28.1 t	34.4 t	42 t
	15 m	15 m	21 m	15 m
	123 kW	123 kW	140 kW	140 kW
	<div>MP21 for diesel machines with 4-point-stabilizers, curved stabilizer legs, individual control of the stabilizers, transport width 2,750mm, all-wheel-drive and two-stage powershift transmission</div> <div>Crawler undercarriage type R15/220, for diesel machines, gauge 2,2m, crawler B60</div> <div>MP28 in M-HDS version for diesel machines with 4-point-stabilizers, strong all-wheel-drive and two-stage powershift transmission.</div> <div>Crawler telescopic undercarriage type T 41/380 with extended track wheel carriers, for diesel machines, with hydraulically adjustable gauge from 2,3m – 3,8 m and B6 crawlers</div>			

SPECIAL APPLICATIONS\*



738E
43.5 t
23 m
186 kW
Wheeled undercarriage MP38-T for diesel machines, Trailer version with large single tires and 4-point-stabilizers, curved stabilizer legs, strong 70t special axles, all-wheel-drive and two-stage powershift transmission with strong traction.



# THE ALL-ROUNDER.

## 718E

The tree care handler impresses with its versatility and compact design – ideal for operations on roads or for problematic tree felling, even in tight working spaces.



### STABLE

- Steady and robust thanks to outriggers
- High load capacity with 360° swivel range

### BENEFITS



### VERSATILE

- Driving on public roads is possible
- Use of various attachments

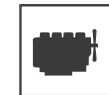


### COMPACT

- Easy transport on a flatbed trailer due to narrow transport width



21,4 t Operating weight



123 kw Motor

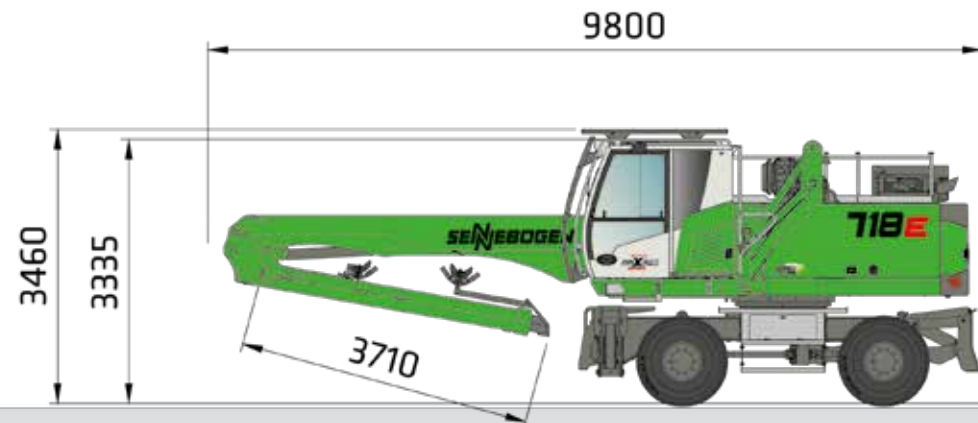


15 m max. Reach

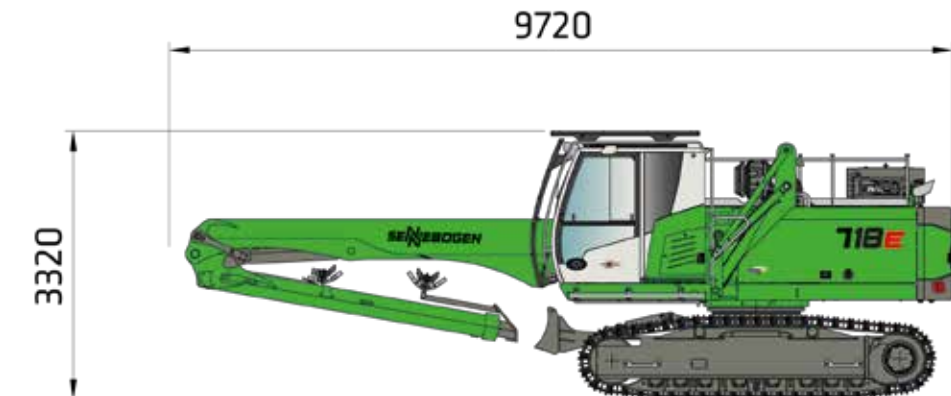




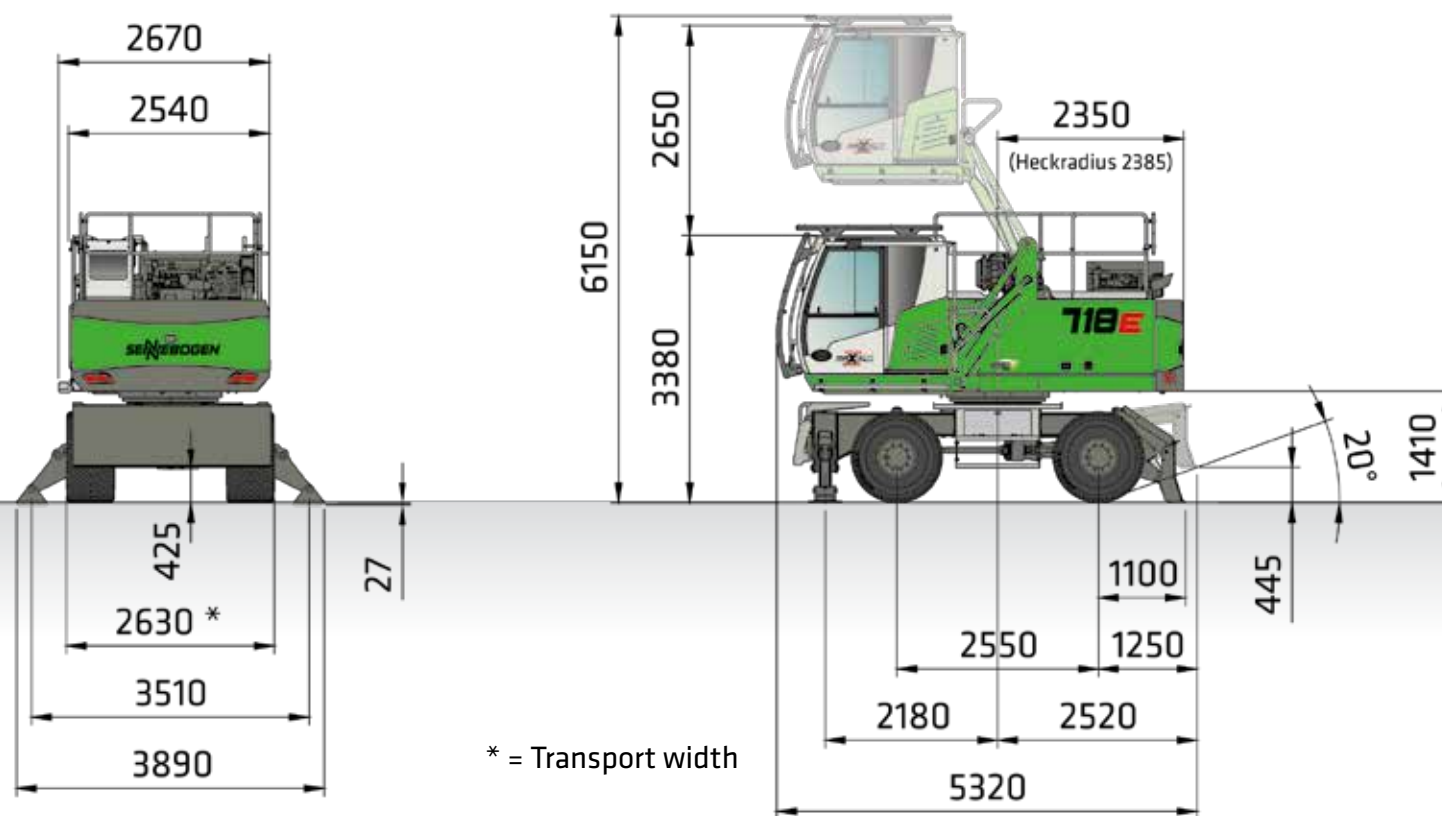
## DIMENSIONS



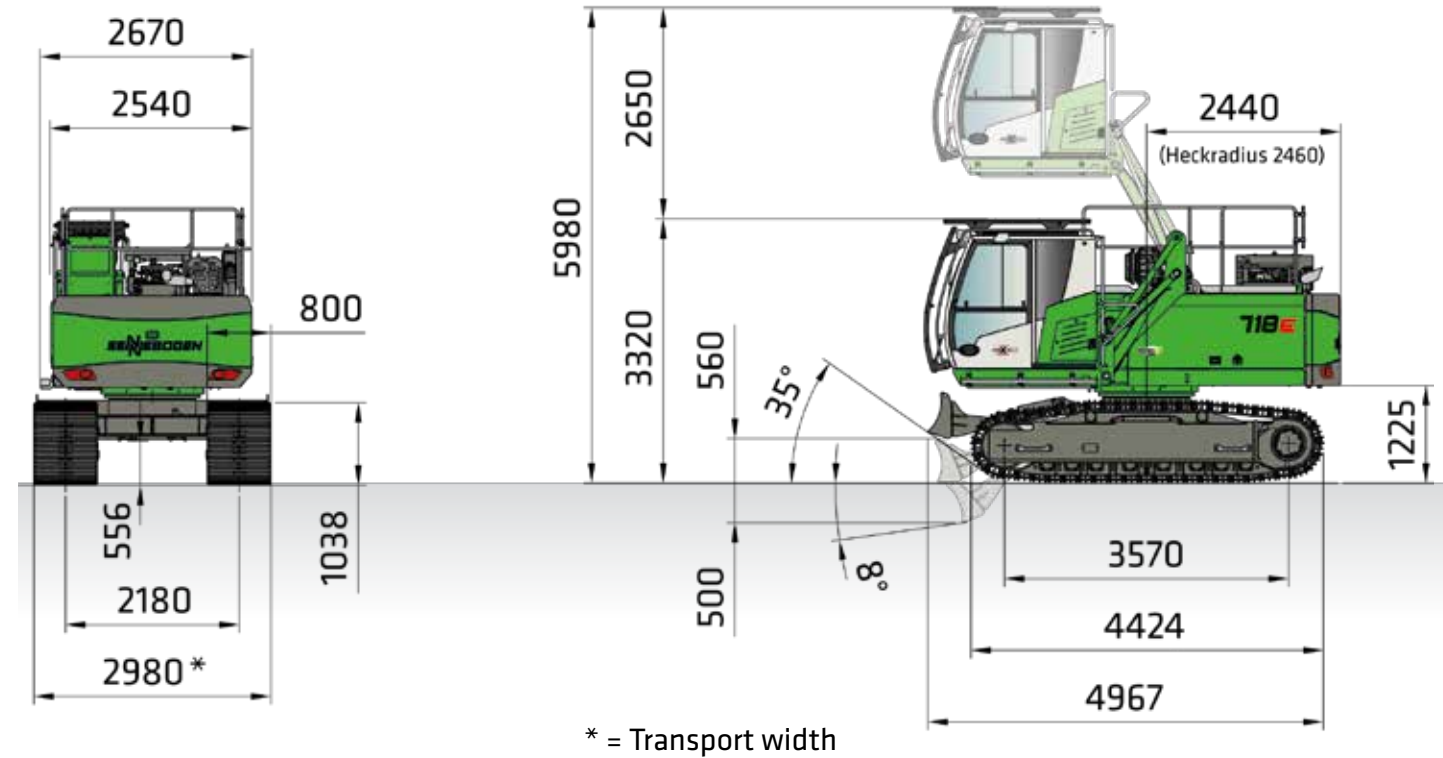
718 M TRANSPORT DIMENSIONS WITH K13 6.5 M COMPACT BOOM AND 4.2 M GRAB STICK + 2.05 M TELESCOPE



718 R TRANSPORT DIMENSIONS WITH K13 6.5 M COMPACT BOOM AND 4.2 M GRAB STICK + 2.05 M TELESCOPE



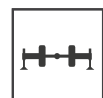
718 M WITH MP21 UNDERCARRIAGE WITH 2-POINT-OUTRIGGER AND STABILIZER BLADE AND TYPE E270 HYDRAULICALLY ELEVATING CAB



718 R WITH R15 / 220 UNDERCARRIAGE WITH STABILIZER BLADE AND TYPE E270 HYDRAULICALLY ELEVATING CAB 30° TILTABLE



## LOAD RATINGS



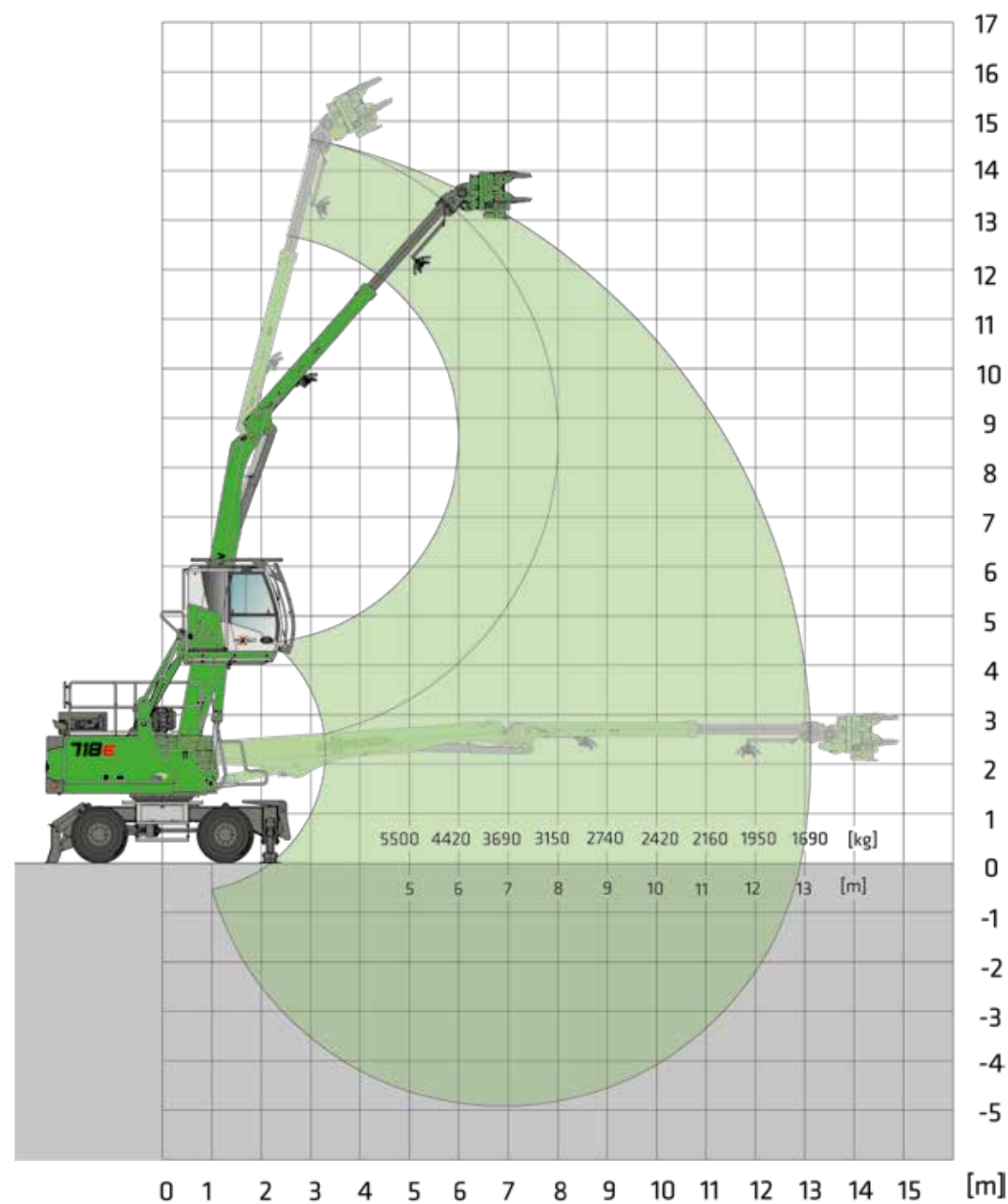
MP26



6.5 m compact boom  
4.2 m + 2.05 m Tele-ST



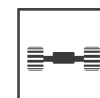
Maxcab E270,  
elevating, 30° tilting



### Notes:

All load ratings are given in tons (t) brought to bear at the end of the stick without equipment on stable, firm and level ground. Equipment such as grabs, load hooks, etc. are part of the specified load ratings. The values given are valid for stationary use with a work area of 360°, on wheels, without supports and with blocked pendulum axles. The values in brackets [ ] are valid for stationary use with an uppercarriage as long as the undercarriage, on wheels, without supports and with blocked pendulum axles. In line with ISO 10567, they amount to 75 % of the static tipping load or 87 % of the hydraulic lifting force. The values in brackets ( ) are valid for travel drive with an uppercarriage as long as the undercarriage, on wheels, without support, and on wheels with active pendulum axles. In line with DIN EN 474-5, they amount to 60 % of the static tipping load. If the machine is being used in stationary mode for lifting applications, as per DIN EN 474-5, it must be fitted with pipe fracture safety devices on the boom lifting cylinders and an overload warning device.

## LOAD RATINGS



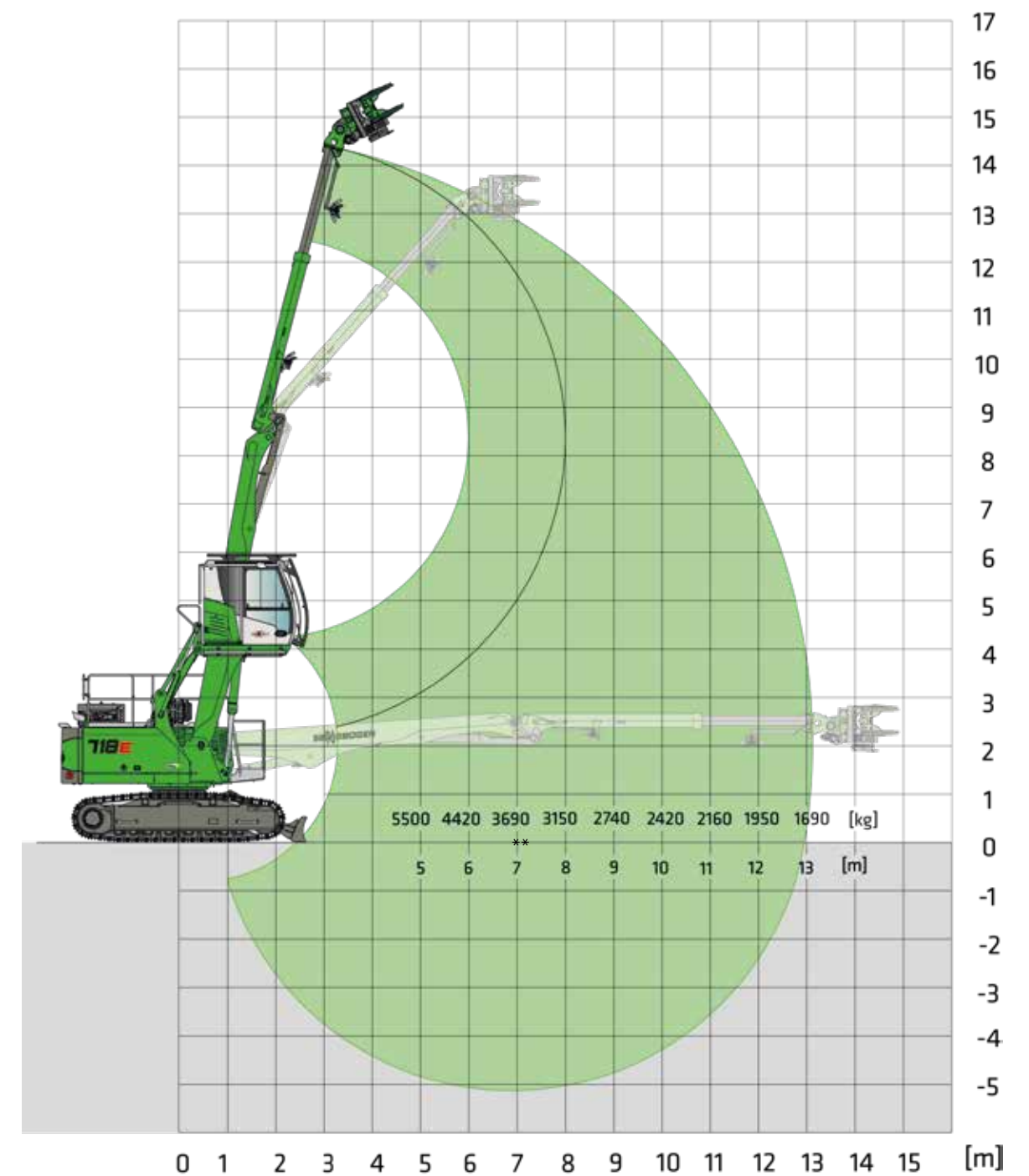
R15/220



6.5 m compact boom  
4.2 m + 2.05 m Tele-ST



Maxcab E270,  
elevating, 30° tilting



### Notes:

All load ratings are given in tons (t) brought to bear at the end of the stick, without tools on firm level ground. Working tools such as grab, magnet, load hook etc. are included in the specified load ratings. The stated values are 75 % of the static tipping load and 87 % of the hydraulic lifting force according to ISO10567. According to EU standard EN 474/5, hydraulic material handlers used for hoisting must be equipped with a pipe rupture safety device on lifting and stick cylinders and an overload warning device. The specified load ratings apply to maximum track width and 360° slewing.



# THE POWERHOUSE.

## 728E

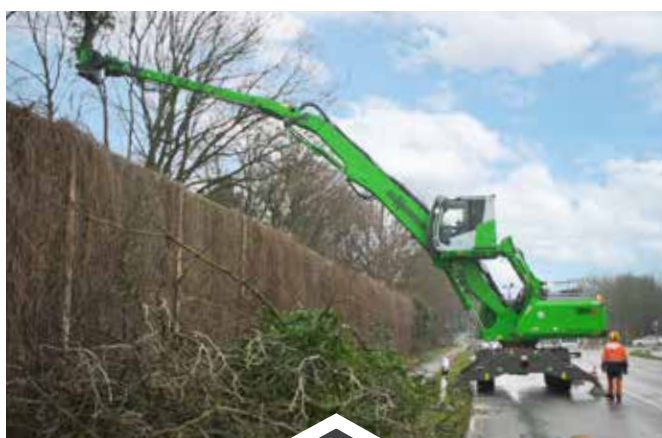
The 728 E combines impressive size with versatile usability, making it the ideal solution for demanding tree felling operations along highways and motorways.



### MAXIMUM POWER

✓ The separate hydraulic circuit for the attachment ensures maximum performance and optimal efficiency.

### BENEFITS



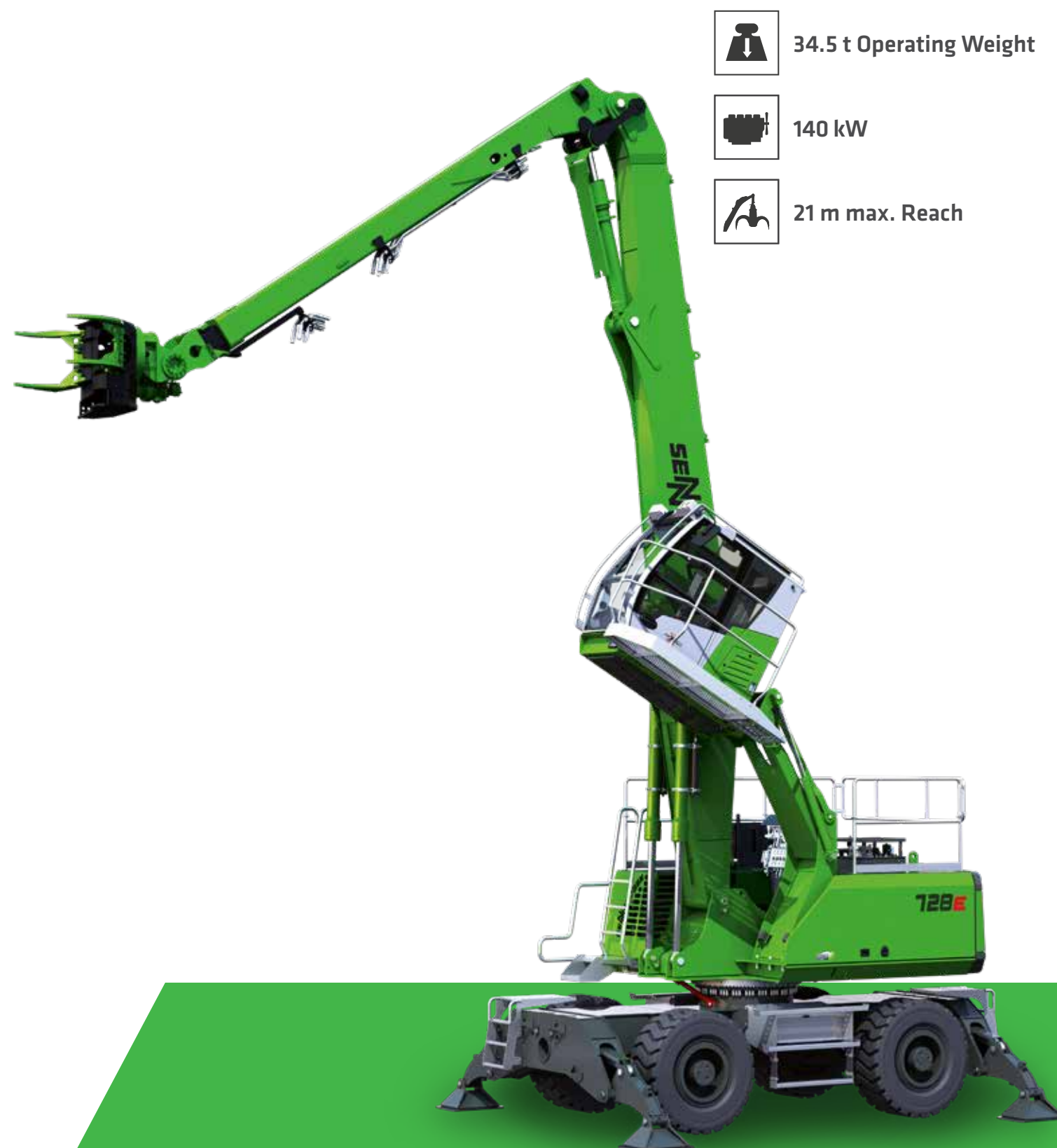
### FOCUS ON SAFETY

✓ Versatile safety features ensure maximum workplace safety – protecting your employees and your business



### EFFICIENCY

✓ Complete your tasks in record time – for maximum efficiency and profitability.



34.5 t Operating Weight



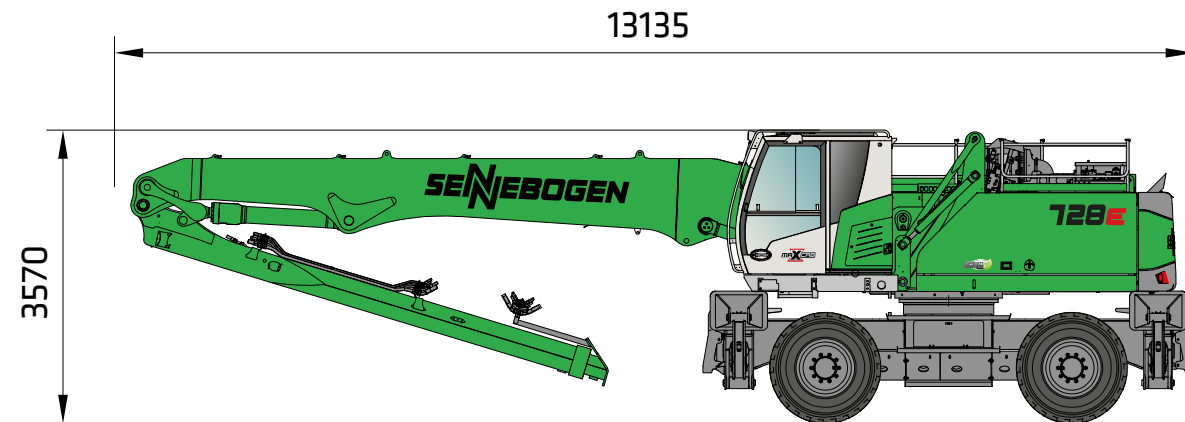
140 kW



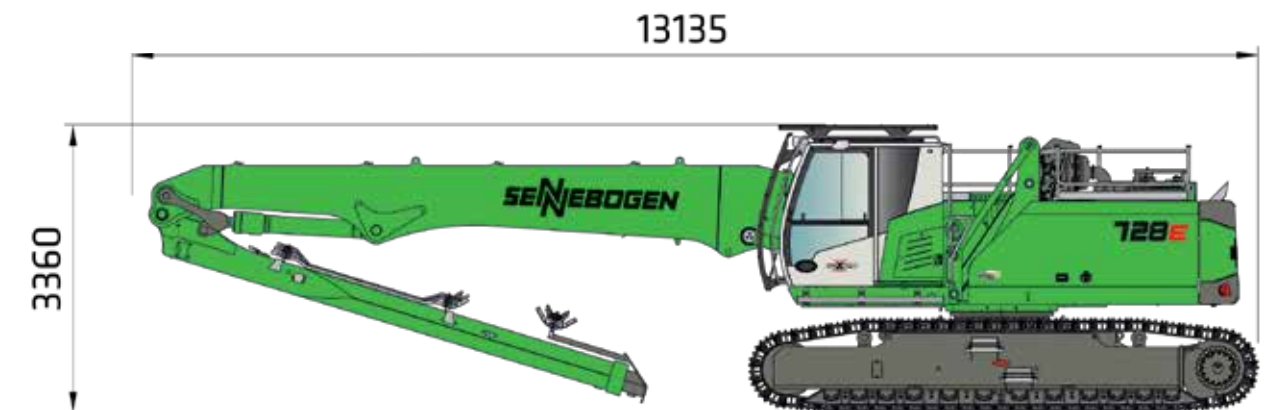
21 m max. Reach



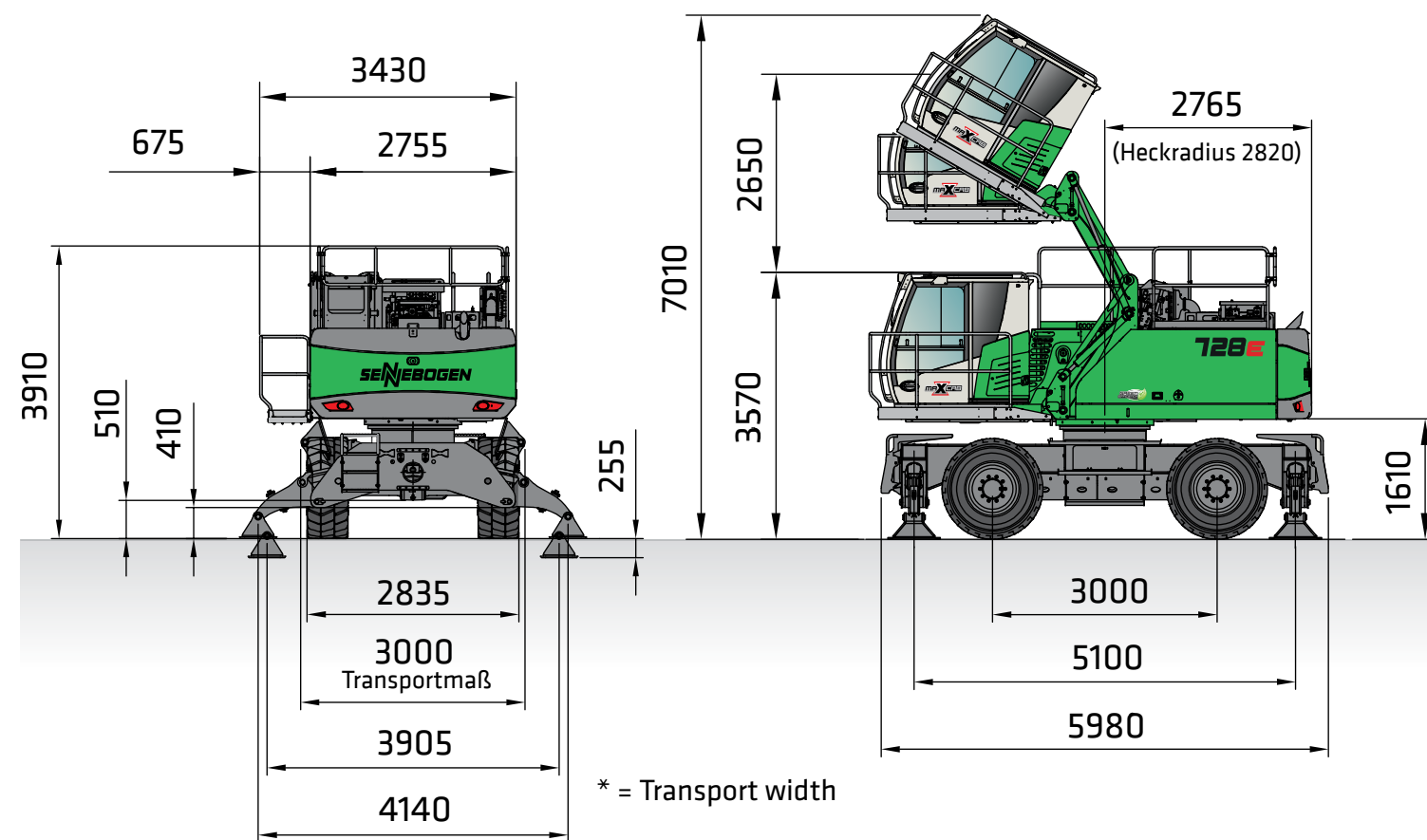
## DIMENSIONS



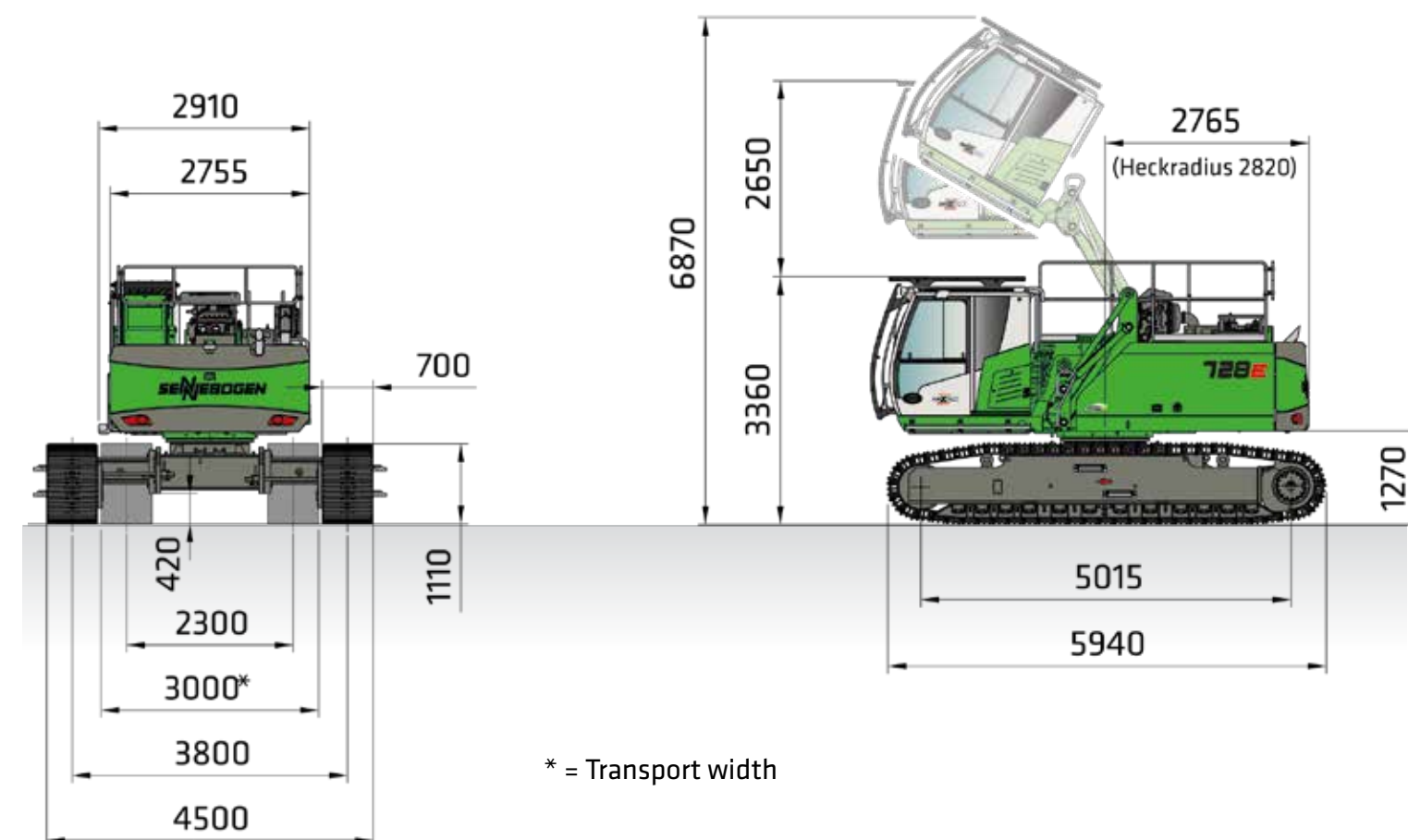
**728 M TRANSPORT DIMENSIONS WITH K13 9.2 M COMPACT BOOM AND 6.0 M GRAB STICK + 2.5 M TELESCOPE**



## 728 R TRANSPORT DIMENSIONS WITH K18 9.2 M COMPACT BOOM AND 6.0 M GRAB STICK + 2.5 M TELESCOPE



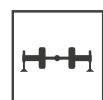
**728 M WITH MP21 UNDERCARRIAGE WITH 2-POINT-OUTRIGGER AND TYPE E270 HYDRAULICALLY ELEVATING CAB**



**728 R WITH UNDERCARRIAGE R41 / 380 AND HYDRAULICALLY ELEVATING CAB TYPE E270 30° TILTING**



## LOAD RATINGS



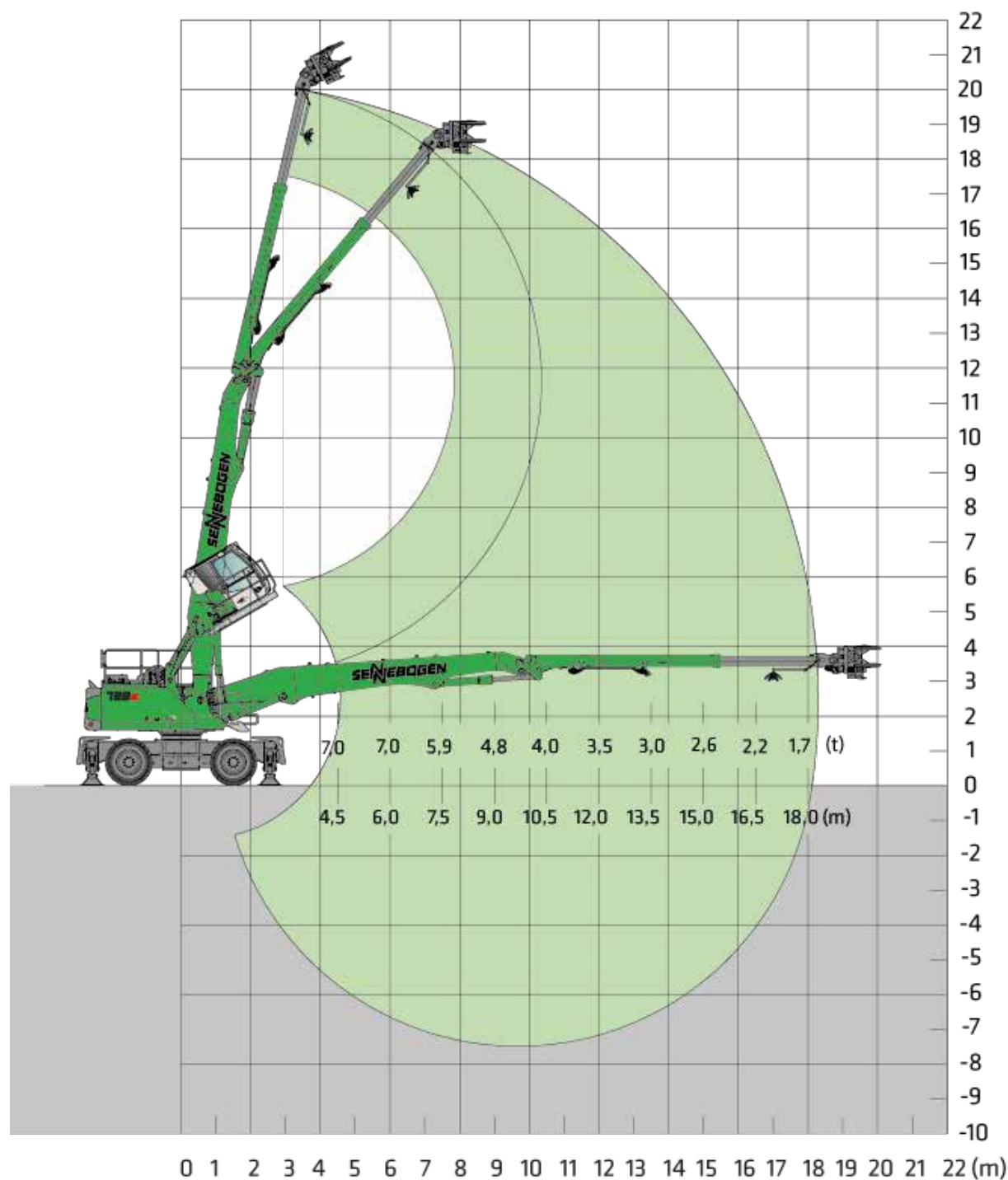
MP28



9.2 m compact boom  
6.0 m + 2.5 m Tele-ST



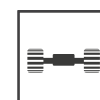
Maxcab E270,  
elevating, 30° tilting



### Notes:

All load ratings are specified in tons (t) and apply at the end of the stick, without attachment, on solid, level ground. Attachments such as grabs, magnets, load hooks, etc. are part of the specified load ratings. The specified values are 75% of the static tipping load or 87% of the hydraulic lifting force in accordance with ISO 10567. In accordance with EU standard EN 474 / 5, hydraulic material handling machines used for hoisting must be equipped with pipe fracture safety devices on the hoist and stick cylinders and an overload warning device. Loads rating apply to a machine with deployed 4-point outrigger support and 360° slewing.

## LOAD RATINGS



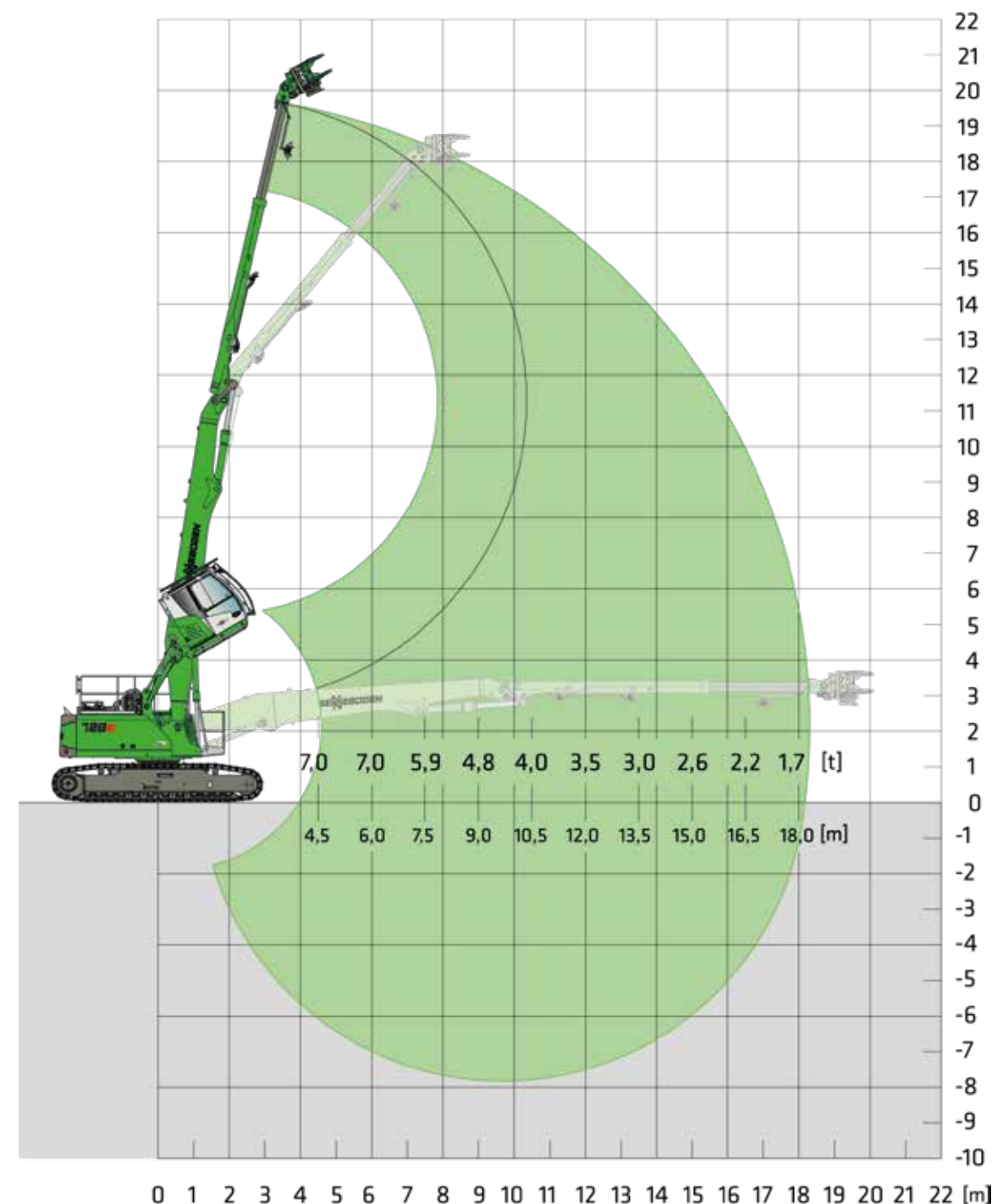
T41-380



9.2 m compact boom  
6.0 m + 2.5 m Tele-ST



Maxcab E270,  
elevating, 30° tilting



### Notes:

All load ratings are given in tons (t) brought to bear at the end of the stick, without tools on firm level ground. Working tools such as grab, magnet, load hook etc. are included in the specified load ratings. The stated values are 75 % of the static tipping load and 87 % of the hydraulic lifting force according to ISO10567. According to EU standard EN 474/5, hydraulic material handlers used for hoisting must be equipped with a pipe rupture safety device on lifting and stick cylinders and an overload warning device. The specified load ratings apply to maximum track width and 360° slewing.



# The Extreme.

## 738E

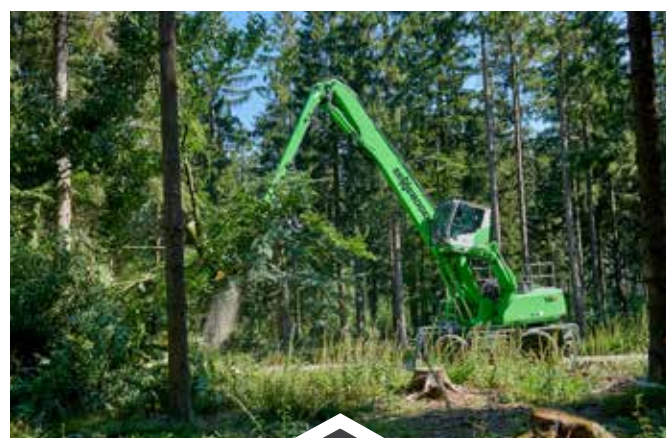
The 738 E is the ultimate machine for extreme applications – with impressive reach and powerful performance, it tackles even the most demanding challenges in timber harvesting and specialized tree felling.

### BENEFITS



#### EXTREME REACH

- Maximum working height through telescopic boom
- Precise operation at great distance



#### PERFORMANCE

- High engine power for powerful tree felling operations
- Optimized hydraulics for fast, precise movements



#### EFFICIENCY

- Fast working cycles thanks to high hydraulic speed and precise control



43.5 t Operating Weight



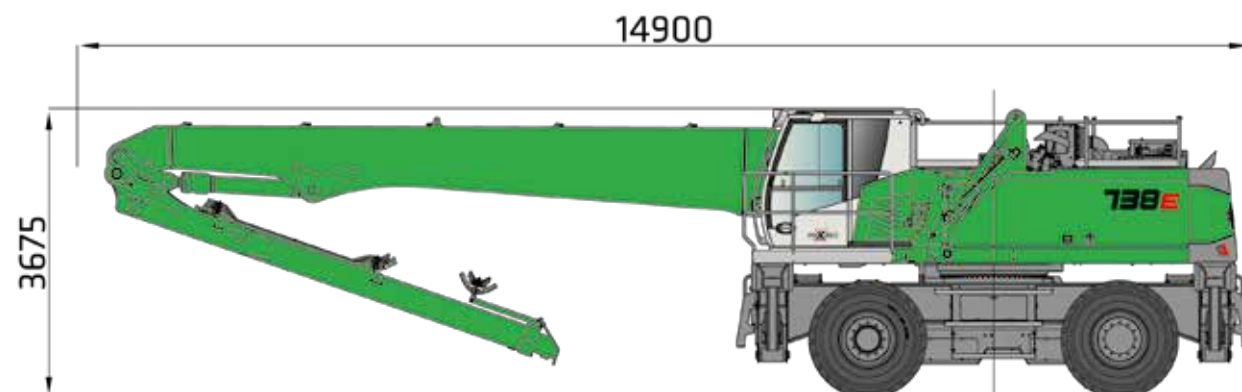
168 kw Motor



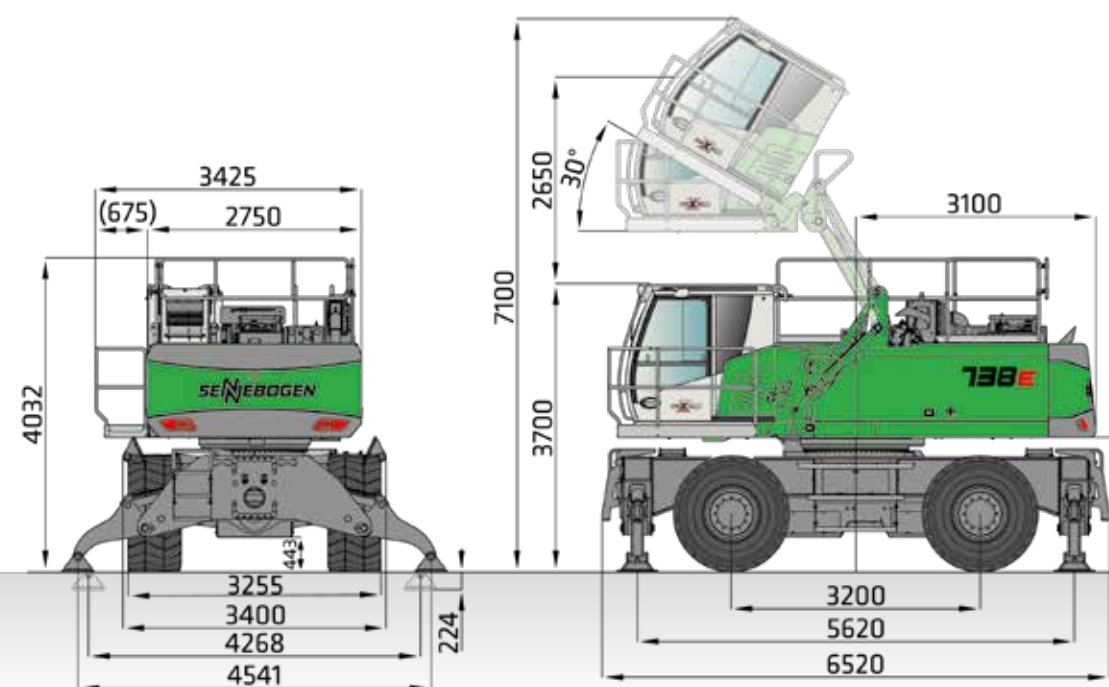
23 m max. Reach



## DIMENSIONS

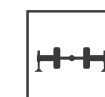


738 M TRANSPORT DIMENSIONS WITH K18 10.5 M COMPACT BOOM AND 6.0 M GRAB STICK + 2.5 M TELESCOPE



738 M WITH MP21 UNDERCARRIAGE WITH 2-POINT-OUTRIGGER AND TYPE E270 HYDRAULICALLY ELEVATING CAB

## LOAD RATINGS



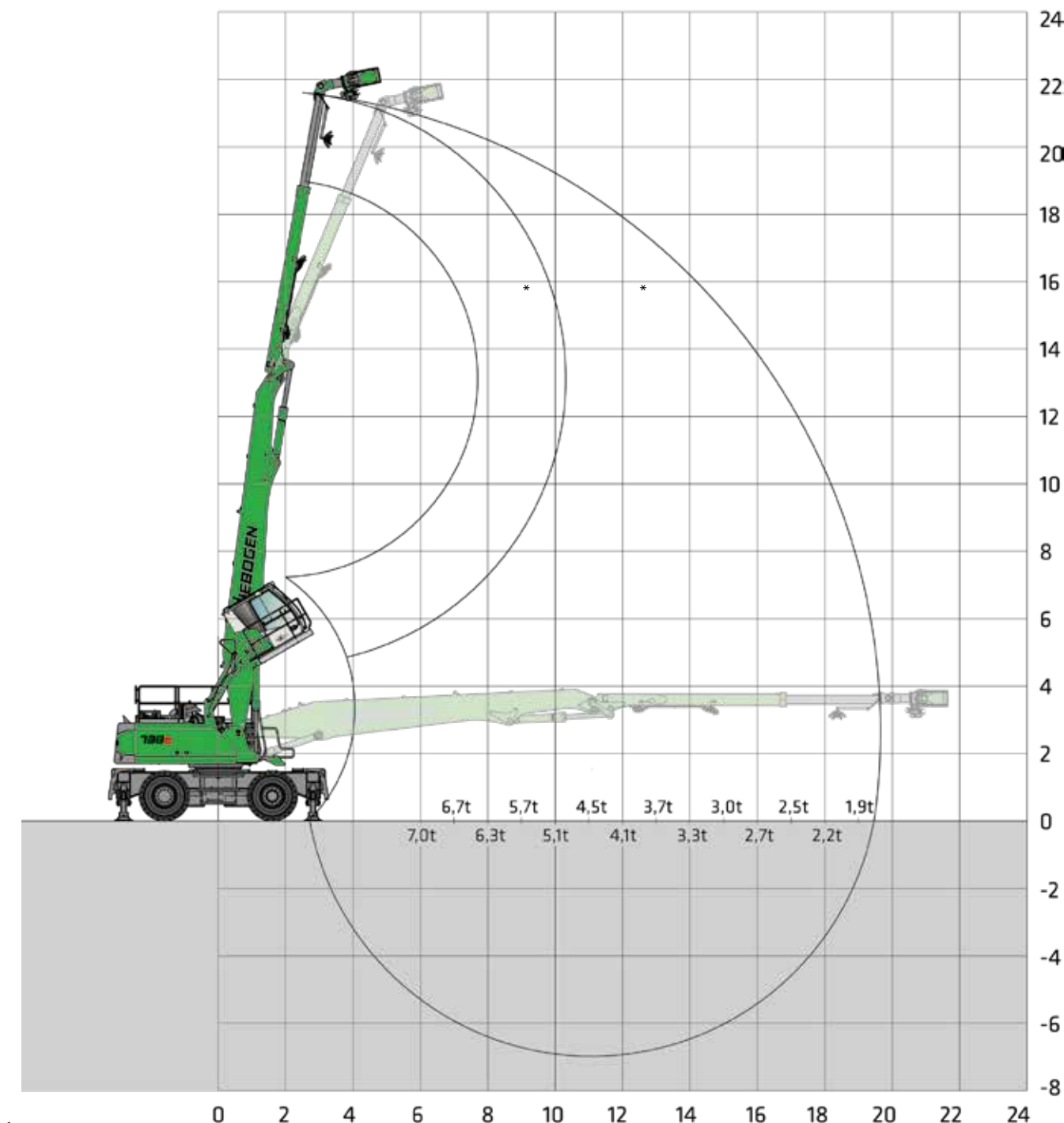
MP38



10.5 m compact boom  
6.0 m + 2.5 m Tele-ST



Maxcab G280,  
elevating, 30° tilting





### Notes:


All load ratings are specified in tons (t) and apply at the end of the stick, without attachment, on solid, level ground. Attachments such as grabs, magnets, load hooks, etc. are part of the specified load ratings. The specified values are 75% of the static tipping load or 87% of the hydraulic lifting force in accordance with ISO 10567. In accordance with EU standard EN 474 / 5, hydraulic material handling machines used for hoisting must be equipped with pipe fracture safety devices on the hoist and stick cylinders and an overload warning device. Loads rating apply to a machine with deployed 4-point outrigger support and 360° slewing.




TECHNICAL DATA, EQUIPMENT

	DIESEL ENGINE				
	718 MOBILE	718 CRAWLER	728 MOBILE	728 CRAWLER	738 MOBILE
TYPE	<b>Stufe V:</b> Cummins B 4.5 Rated power: 123 kW/2200 min <sup>-1</sup> Operating point standard: 123 kW/2200 min <sup>-1</sup> Operating point ECO: 126 kW/2000 min <sup>-1</sup>  <b>Stufe IIIa:</b> Cummins QSB 4.5 Rated power: 119 kW/2200 min <sup>-1</sup> Operating point standard: 119 kW/2200 min <sup>-1</sup> Operating point ECO: 123 kW/2000 min <sup>-1</sup>		<b>Stufe V:</b> Cummins B6.7 FR95889 Rated power: 129 kW/2200 min <sup>-1</sup> Operating point standard: 140 kW/1700 min <sup>-1</sup> Operating point ECO: 133 kW/1500 min <sup>-1</sup>		<b>Stufe V:</b> Rated power: 186 kW/2200 min <sup>-1</sup> Operating point standard: 188 kW /1900 min <sup>-1</sup>  <b>Stufe IIIa:</b> Rated power: 164 kW/2000 min <sup>-1</sup> Operating point standard: 172 kW/1800 min <sup>-1</sup>
	Direct injection, turbo charged, intercooling, reduced emissions, Eco mode (1800 rpm), automatic idling, automatic stop after 5 minutes, fuel pre-warming				
COOLING	Water-cooled, cooling fan with automatic reversal at intervals				
DISPLACEMENT	4.5 l		6.7 l		6.7 l
NUMBER OF CYLINDERS	4		6		6
BATTERIES	2 x 150 Ah				
ELECTRICAL SYSTEM	24 V				
OPTIONS	Engine coolant preheating				
	Electric fuel pump				
	Jump start pole				
	Battery preheating				
	Additional cyclone pre-separator during increased dust load				

	TANK CAPACITIES				
	718 MOBILE	718 CRAWLER	728 MOBILE	728 CRAWLER	738 MOBILE
FUEL	300 l		450 l		450 l
AD BLUE	30 l		45 l		45 l
HYDRAULIC TANK	350 l		410 l		410 l
CENTRAL LUBRI-CATION SYSTEM	Automatic central lubrication for equipment and slewing ring				

	UPPERCARRIAGE				
	718 MOBILE	718 CRAWLER	728 MOBILE	728 CRAWLER	738 MOBILE
DESIGN	Torsion-resistant upper frame with end shields all the way from boom linkage to counterweight for optimized force transmission, precision-crafted, steel bushings for boom mounting. Lockable storage space, excellent design, very low noise emission values				
COOLING SYSTEM	3-circuit cooling system with high cooling output, thermostatically regulated fan drive for oil cooler and water cooler, automatic cooling fan reversal for cleaning				
ELEKTRIC	Central electrical distributor, battery disconnect switch				
SAFETY	Camera, right and rear view Emergency control to guarantee machine availability in restricted operation by bypassing the main functions				
OPTIONS	Slew brake via foot pedal				
	Bar graph pressure display				
	Circumferential uppercarriage railing, folding for transport				
	Light packages with LEDs				
	Fire extinguisher				
	Special paint finish (multi-colored), RAL standard				
	Air compressor for cleaning the cab, cooler and attachment				
	Additional cameras				
	Electrical hydraulic tank preheating				
	Low temperature package				
	Platform with railing next to cab				





	HYDRAULIC SYSTEM				
	718 MOBILE	718 CRAWLER	728 MOBILE	728 CRAWLER	738 MOBILE
	Load Sensing / LDUV hydraulic system, hydraulically operated work functions				
PUMP TYPE	Swash plate-type variable-displacement piston pump, load pressure-independent flow distribution for simultaneous, independent control of work functions				
PUMP CONTROL	Zero stroke control, demand flow control, pumps only pump oil according to actual consumption, pressure cut-off, load limit control				
SUPPLEMENT HYDRAULICS	Large-scale supplementary hydraulics and additional piping to independently drive different equipment without impairing the main functions				
DELIVERY RATE	Main pump: 325 lt/min Auxiliary: 190 lt/min at 250bar		Main pump: 420 lt/min Auxiliary: 205 lt/min bei 350bar		Main pump: 545 lt/min Auxiliary: 194 lt/min bei 250bar
OPERATING PRESSURE	up to 350 bar				
FILTRATION	High-performance filtration with long change interval				
CONTROL SYSTEM	Proportional, precision hydraulic actuation of the work movements, 2 hydraulic servo joysticks for work functions, additional functions via switches and foot pedals				
SAFETY	Hydraulic circuits safeguarded with safety valves, Hydraulic accumulator for emergency lowering of equipment and cab when engine is at standstill				
OPTIONS	Organic oil - environmentally friendly				
	Supplementary hydraulics package				
	SENNEBOGEN HydroClean micro-filter system (3 µm) with water separator				
	Pressure filter for separate variable displacement pump for equipment				
	Auxiliary section on main control block				
	ToolControl for controlling various equipment				
	Hydraulic preparation for equipment				

	SLEWING DRIVE				
	718 MOBILE	718 CRAWLER	728 MOBILE	728 CRAWLER	738 MOBILE
GEARBOX	Planetary gears with axial piston engine, integrated brake valves				
PARKING BRAKE	Spring-loaded, hydraulically ventilated multi-disk safety brake				
SLEWING DRIVE	Internal toothing, strong ball bearing slewing ring, sealed				
TORQUE	50 kNm		80 kNm		90 kNm
SLEWING SPEED	0-8 min <sup>1</sup> , variable				
	CAB 				
	718 MOBILE	718 CRAWLER	728 MOBILE	728 CRAWLER	738 MOBILE
CAB TYPE	Hydraulically elevating cab E270				
CAB FEATURES	Automatic heating/air conditioning with central control unit, SENNEBOGEN SENCON control & diagnostic system Sliding door incl. sliding window, excellent ergonomics, seat heating, vibration damper, air-sprung comfort seat, windscreen made of bulletproof glass, fresh air/recirculated air filter				
STEERING	Steering wheel control with adjustable steering column		Joystick steering		Joystick steering
OPTIONEN	Tilttable cab, 30°				
	Carbon filter				
	Auxiliary heating system with timer				
	Active seat climate control				
	Joystick controls				
	Windshield wipers with wipe-wash function for front and rear windows				
	Bulletproof glass in skylight				
	Side and rear safety glazing made of polycarbonate				
	Sunblind for skylight and windshield				
	Platform next to railing (bolted)				
	Protective roof grating				
	FOPS protective roof grating				
	Protective front guard				
	Radio with USB port, MP3 and Bluetooth				
	Special arrangement of joysticks and pedals				
	Cooling box behind the operator's seat (electric)				



	UNDERCARRIAGE				
	718 MOBILE	718 CRAWLER	728 MOBILE	728 CRAWLER	738 MOBILE
TYPE	MP21 for diesel machines with 4-point-stabilizers, curved stabilizer legs, individual control of the stabilizers, transport width 2,750mm, all-wheel-drive and two-stage powershift transmission	Crawler undercarriage type R15/220, for diesel machines, gauge 2,2m, crawler B60	MP28 in M-HDS version for diesel machines with 4-point-stabilizers, strong all-wheel-drive and two-stage powershift transmission.	Crawler telescopic undercarriage type T 41/380 with extended track wheel carriers, for diesel machines, with hydraulically adjustable gauge from 2,3m – 3,8 m and B6 crawlers	Wheeled undercarriage MP38-T for diesel machines, Trailer version with large single tires and 4-point-stabilizers, curved stabilizer legs, strong 70t special axles, all-wheel-drive and two-stage powershift transmission with strong traction.
DRIVE	All-wheel drive powered by two direct-mounted variable-displacement hydraulic engines incl. automatically operated brake valve. Strong planetary axles with integrated steering cylinders, 2-circuit multi-disk service brake, switch steering direction, switch driving direction				
PARKING BRAKE	Spring-loaded multi-disk brake				
TIRES	600/50-22.5, 4-way Single Pneumatic Tires	-	20.5-R25, 4-way Single Luftreifen	-	650/65-R25, 4-way Single Luftreifen
SPEED	0 - 20 km/h				Stage 1: 0 – 5.5 km/h Stage 2 2: 0 – 25 km/h
OPTIONS	Set-up for trailer coupling				
	Protection for travel drive				
	Limited road approval	-	-	-	-

	EQUIPMENT				
	718 MOBILE	718 CRAWLER	728 MOBILE	728 CRAWLER	738 MOBILE
DESIGN	Box design with large mounting points for a long service life in sealed and dirt-protected design. Very large mounting points with low-maintenance, sealed special bushings, precision-crafted.				
MAXIMUM REACH	up to 15 m with equipment		up to 21 m with equipment		up to 23 m with equipment
CENTRAL LUBRI-CATION	Automatic central lubrication system				
CYLINDERS	Special hydraulic cylinder with hydraulic end position damping, optimized kinematics for high lifting power. The material handling attachment is specifically designed for high-performance applications.				

	OPERATING WEIGHT				
	718 MOBILE	718 CRAWLER	728 MOBILE	728 CRAWLER	738 MOBILE
WEIGHT (BASIC MODEL INCL. EQUIPMENT)	ca. 21.4 t	ca. 28 t	ca. 34.5 t	ca. 42 t	ca. 43.5 t
NOTE	Operating weight varies by model and equipment. Subject to technical changes!				





# THE RIGHT MACHINE FLEET FOR EVERY APPLICATION









© WESTTECH Maschinenbau GmbH







With the right machine and attachment, you can tackle any tree felling challenge – we provide the optimal solution for every application.



	OPERATING WEIGHT	26,3 t	28,6 t	38 t	45 t
	MOTOR	118 kW	129 kW	129 kW	186 kW
	REACH	12 m	13 m	14 m	17 m
	UNDERCARRIAGE	Mobile	Mobile	Crawler (Mobile available)	Crawler
	CAB				

## THE PERFECT ADDITION TO YOUR FLEET

With the multifunctional telehandler 360 G, you can effortlessly load wood chips – thanks to the elevating cabin with a 4.25-meter eye level, you always have the perfect view.

-  Max. load capacity 6 t
-  Operating weight 12.5 t
-  Max. Lifting height 8.5 m
-  Motor 123 kW





# WE ARE A FAMILY-OWNED COMPANY

WITH DECADES OF EXPERIENCE –  
YOU CAN RELY ON OUR TECHNICAL SOLUTIONS.

Since 1952, we stand for customer-specific mechanical engineering and have successfully established ourselves as market leader in many industries of crane technology and demanding material handling worldwide.



GENERAL MANAGEMENT: ALFRED ENDL, THORSTEN RESCH, SEBASTIAN SENNEBOGEN, ERICH SENNEBOGEN, WALTER SENNEBOGEN, ANTON SENNEBOGEN, DR. ANDREAS MAURER (from left to right)



FAMILY SENNEBOGEN: ERICH, SEBASTIAN, ANTON, VICTORIA, ALEXANDER, WALTER (from left to right)

## WE STAND FOR

### STABILITY AND RELIABILITY

Our stable and continuous development results in maximum reliability and performance throughout the entire group.

### ORGANIC GROWTH AND INDEPENDENCE

To us, this means focusing on the future. For our partners and customers, it stands for long-term reliability and security.

### A STRONG HERITAGE SECURES THE FUTURE

Thanks to solid and strong financial management, the group of companies has developed into a leading manufacturer on the market. Continuous investment in our companies ensures that we remain ahead of the game.

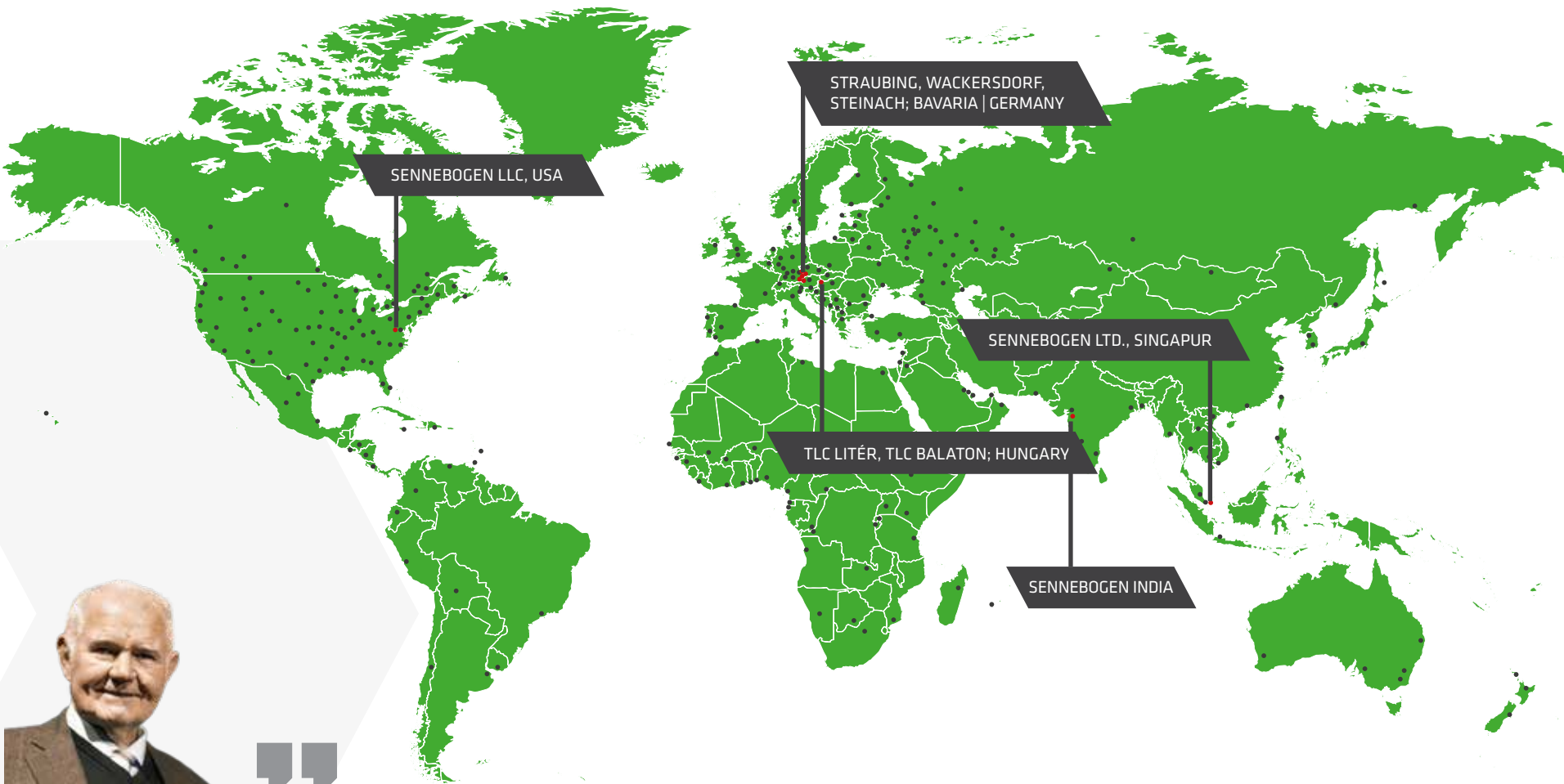
### PROXIMITY TO OUR PARTNERS

Meeting our customers, dealers, suppliers or employees in person helps us to improve every day.



# WORLDWIDE CUSTOMER FOCUS

- Locations and branches
- Sales and service partners



“If you don't change anything, you will not improve anything.”

Erich Sennebogen, 1931 - 2011  
Founder

REPRESENTED WORLDWIDE  
WITH OUR LOCATIONS AND  
SALES PARTNERS.





# WE VALUE EXCELLENT SERVICE

Even after purchasing a SENNEBOGEN machine, we offer our customers comprehensive services - everything from a single source.

Further information  
on our range of services  
can be found here.



## WE ENSURE MAXIMUM AVAILABILITY.

With the Customer Service Center, we bundle all service activities centrally at one location. A tailor-made service offering for our customers is important to us.

- /// **SERVICE KITS** – for easy and preventive maintenance
- /// **INSPECTION KITS** – service package for the first 2,000 operating hours
- /// **WARRANTY** – component warranty can be selected individually according to customer requirements



**mySENNEBOGEN**

Central portal to SENNEBOGEN's digital world

- /// **SENtrack**  
Telematic system for intelligent fleet management
- /// **SENNEBOGEN TROUBLESHOOTER**  
software solution for guided troubleshooting
- /// **REMOTE SUPPORT**  
Audiovisual guide for service technicians
- /// **SUPPORT TICKET SYSTEM**  
Intuitive ticket system for direct contact with service personnel
- /// **FLEET MANAGEMENT**  
Efficient monitoring of your machine fleet

**SENNEBOGEN**  
Academy

The SENNEBOGEN Academy offers a wide range of training courses for operators of material handlers, telehandlers, cranes and duty cycle cranes – so that they can get the most out of their machines.

### OUR SENNEBOGEN ACADEMY OFFERS:

- /// Operator training
- /// Driving licenses
- /// Technical training
- /// E-courses







**SENtrack**



**MOVE BIG THINGS WITH US**



over **73**  
years of  
experience

**100 %**  
family owned  
company

over **2200**  
employees worldwide

**5**  
production plants  
in Germany

over **180**  
sales and service  
partners worldwide

**27**  
different material  
handling machines

# FLEET MANAGEMENT FOR PROFESSIONALS

**1. REDUCE SERVICE COSTS**

Monitor the machine and its main operating parameters (temperatures, consumption). If key figures deviate significantly from the target value, the user is informed immediately.

**2. REDUCE CONSUMPTION**

Easily identify and optimize idle times or change set parameters when machines are underloaded to reduce consumption.

**3. IMPROVE PRODUCTIVITY**

With just a few clicks, you can identify and optimize machine capacity, analyze routes and thus make your processes more profitable.

**4. SAFEGUARD YOUR INVESTMENT**

Alarm messages inform you about critical machine conditions. In the event of irregular movements, the machine can also easily be deactivated remotely.

[www.sennebogen.com/sentrack](http://www.sennebogen.com/sentrack)



Telehandler	Balancer	Material handler	Duty cycle crane	Crawler crane	Telescopic crane	Port crane
4-6 t	130-300 t	17-420 t	30-300 t	50-200 t	16-200 t	300 t



This catalog describes machine models, the scope of equipment of individual models, and configuration options (standard equipment and optional equipment) of the machines delivered by SENNEBOGEN Maschinenfabrik GmbH. Machine illustrations may contain optional and supplementary equipment. Actual equipment may vary depending on the country to which the machines are delivered, especially in regard to standard and optional equipment. All product designations used may be trademarks of SENNEBOGEN Maschinenfabrik GmbH or other supplying companies, and any use by third parties for their own purposes may violate the rights of the owners. Please contact your local SENNEBOGEN sales partner for information concerning the equipment variants offered. Requested performance characteristics are only binding if they are expressly stipulated upon conclusion of the contract. Delivery options and technical features are subject to change. All information is supplied without liability. Equipment is subject to change, and rights of advancement are reserved. © SENNEBOGEN Maschinenfabrik GmbH, Straubing, Germany. Reproduction in whole or in part only with written consent of SENNEBOGEN Maschinenfabrik GmbH, Straubing, Germany.



**SENNEBOGEN**  
**Maschinenfabrik GmbH**  
Hebbelstraße 30  
94315 Straubing, Germany  
☎ +49 94 21 540-0

➞ [www.sennebogen.com](http://www.sennebogen.com)

**SENNEBOGEN LLC**  
1957 Sennebogen Trail  
Stanley, North Carolina 28164, USA  
☎ +1 704 347-4910  
✉ [sales@sennebogenllc.com](mailto:sales@sennebogenllc.com)  
[www.sennebogen-na.com](http://www.sennebogen-na.com)

**SENNEBOGENPte. Ltd.**  
25 International Business Park  
# 04-11/12 German Centre  
Singapore 60 99 16  
☎ +65 6562 826-0  
✉ [info@sennebogen.asia](mailto:info@sennebogen.asia)  
[www.sennebogen.asia](http://www.sennebogen.asia)

**MOVE BIG THINGS**