



SHEAR SOLUTIONS FOR RECYCLING

CONTENTS

OUR SHEAR SOLUTIONS

Use our shears and attachments for flexible, efficient and precise operation.

04 APPLICATIONS AND ADVANTAGES OF MOBILE SCRAP SHEARS ►

06 2ND BOOM ► Use with heavy shears



08 3RD BOOM ► Use with light /medium shears

10 VARIO TOOL ► Machine as multi-carrier with fully automatic quick-change system

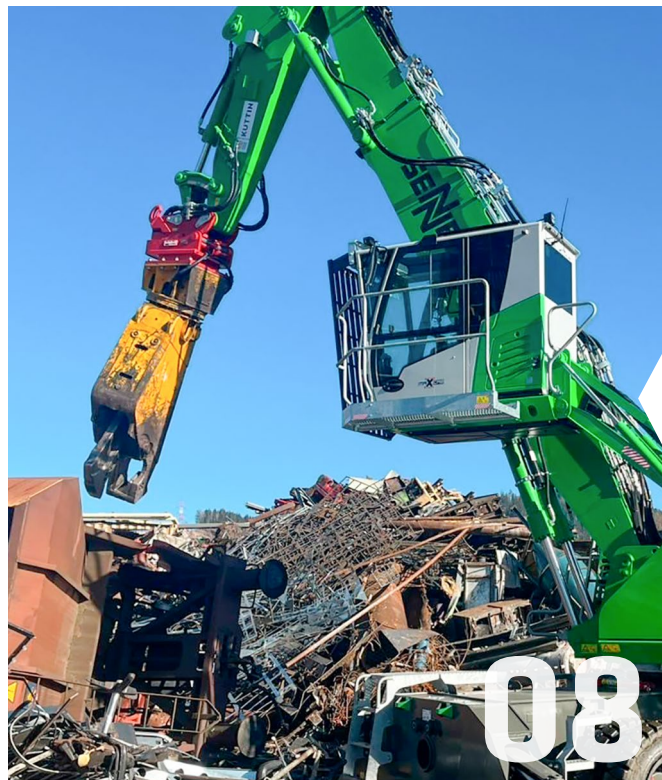
12 825 E VT

13 830 E VT

14 835 E VT

Information and reports on the use of shears in recycling can also be found at

→ www.sennebogen.com



FOR EVERY APPLICATION THE RIGHT MACHINE

Growing demands for safety at work and ever stricter environmental regulations require machine tools that actively help to reduce CO₂ emissions in a safe manner.



ADVANTAGES OF MOBILE SCRAP SHEARS COMPARED TO FLAME CUTTING IN THE RECYCLING PROCESS

SAFETY

- Safe operation with significantly lower risk of injury
- More attractive working environment – safe and easier working without manual flame cutting

ENVIRONMENT

- Compliance with air emission laws
- Lower CO₂ emissions
- Improved air quality in the work environment

COST

- Faster processing: up to 10-fold increases in tons handled per hour
- Lower operating costs: up to 70% reduced costs per ton
- No costs for exhaust gas collection systems / air pollution control



Manual flame cutting

These advantages help to meet the legal requirements of the Technical Instructions on Air Quality Control and minimize the environmental impact of recycling and steel processing plants.



Mobile shears on excavator

ADVANTAGES OF MOBILE SCRAP SHEARS ON A SENNEBOGEN MATERIAL HANDLER

FLEXIBILITY AND MOBILITY

- Undercarriage variants as mobile or crawler versions for 360° use: variable use directly at the storage location, thus reducing the transport distances of the material

EFFICIENT APPLICATION

- Hydraulics packages matched to the shears works
- Fast and efficient cycle times
- Tool control – oil quantities and pressures for up to 10 tools programmable

SAFETY

- Good, elevated view of the cutting area from the protected cab

COMBINATIONS

- Various boom and stick combinations
- Optimal reach customized to your needs

830 E Electro Vario Tool – crawler with pylon extension, cable drum and 4.7 t shears



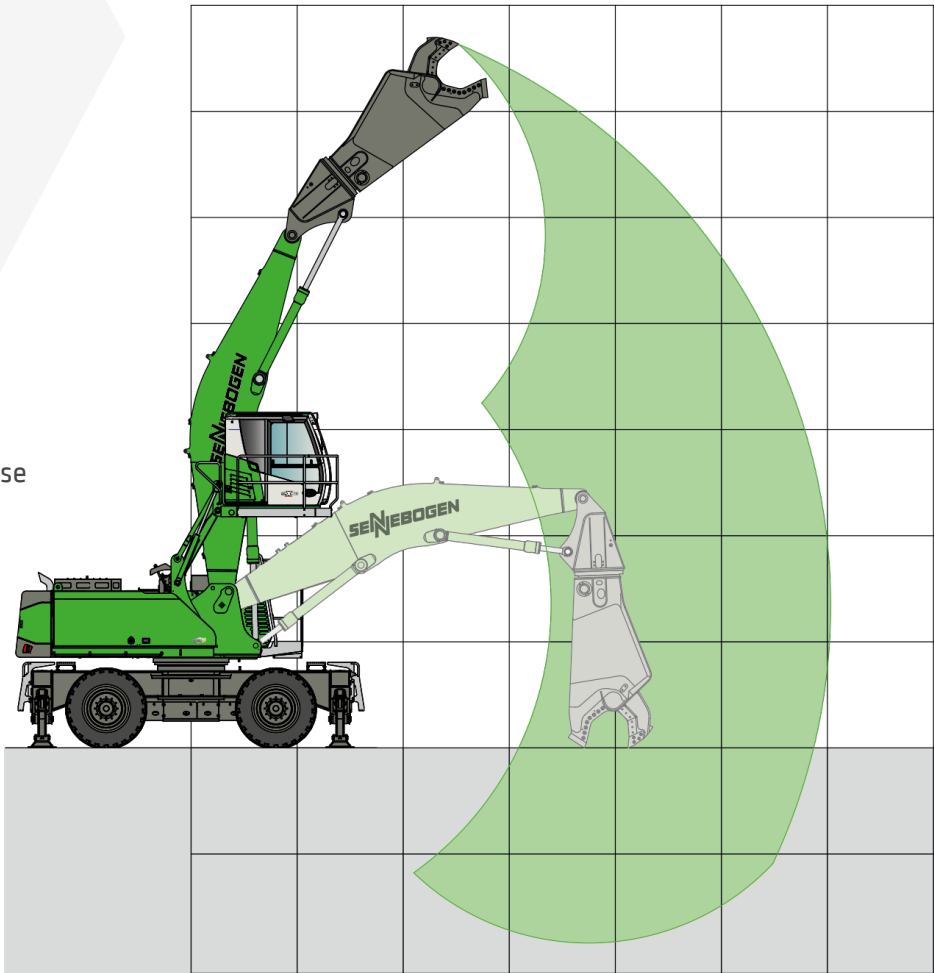
ALL MACHINES ALSO AVAILABLE WITH ELECTRIC DRIVE

SENNEBOGEN offers all machines with electric drive – a clear competitive advantage

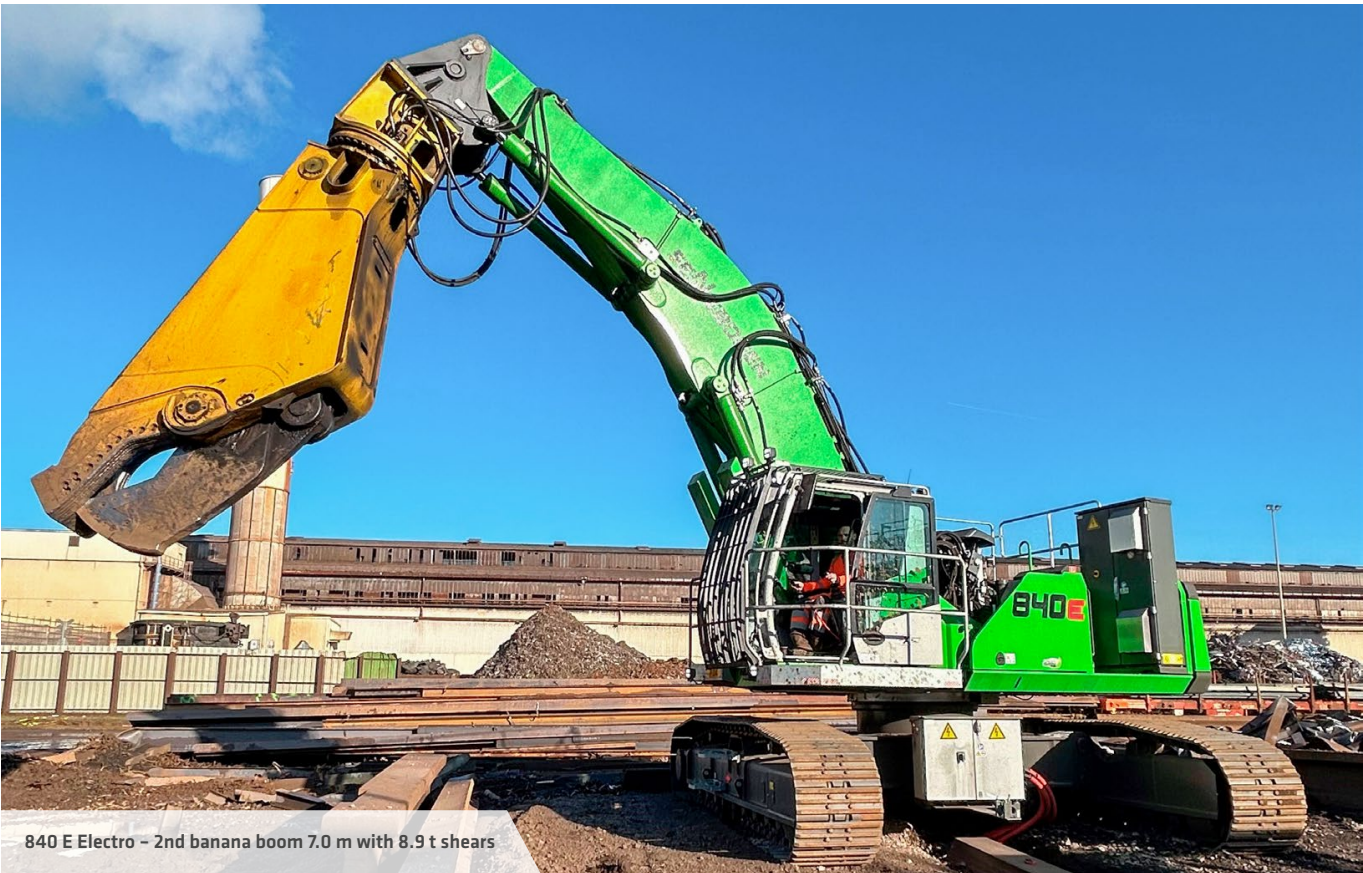
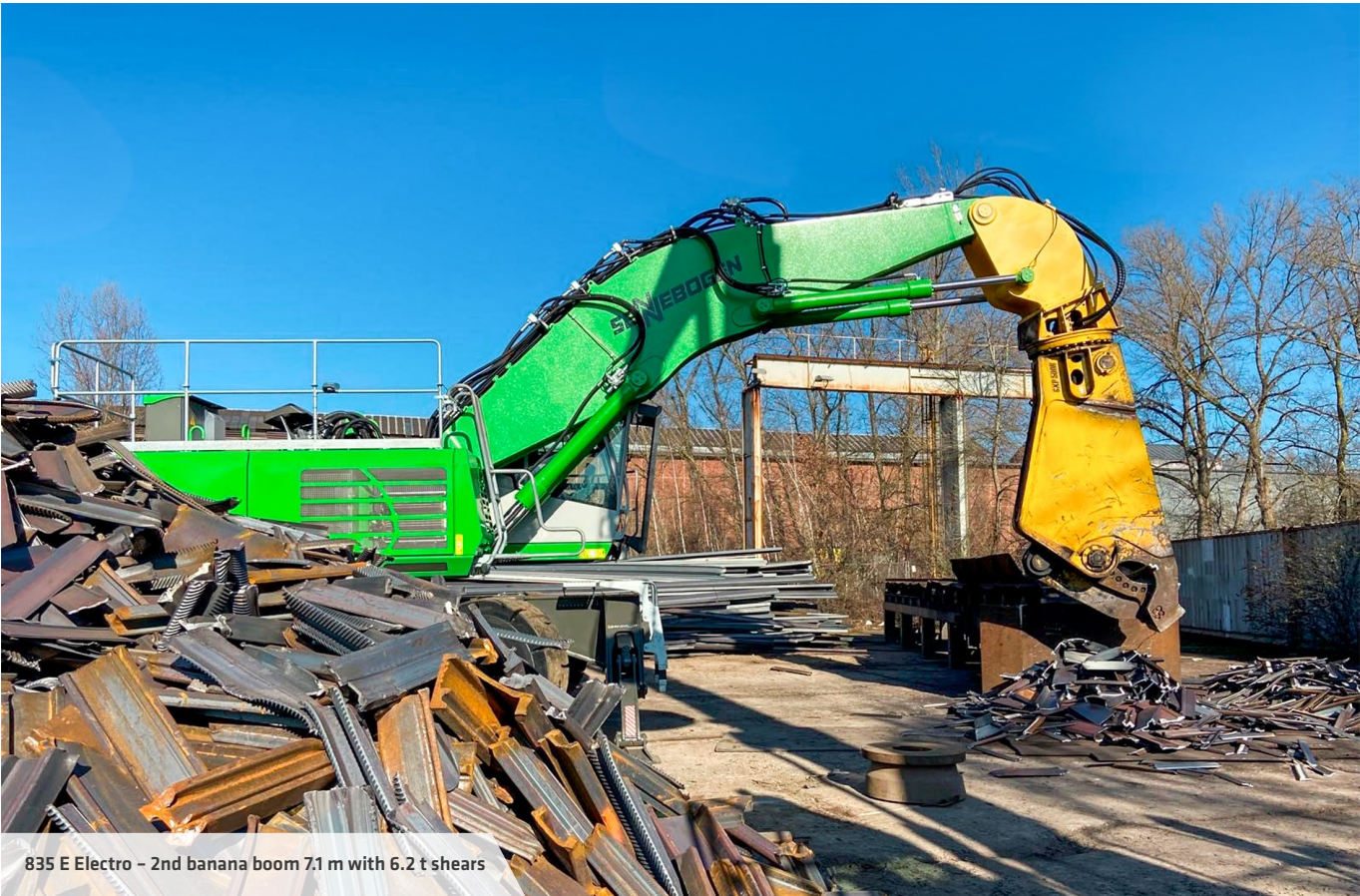
- Emission-free operation – CO₂-savings and subsidies
- Low operating and service costs
- Long-lasting electrical components
- 24/7 use without refueling

SHEARS ON 2ND BOOM – INSTEAD OF STICK

- Maximum shear sizes for heavy-duty applications
- Machine works exclusively with the shear
- Curved boom variant “banana” for better working kinematics at close range
- Maximum stability and control thanks to the direct connection of the shear, enabling more precise cuts and increased efficiency



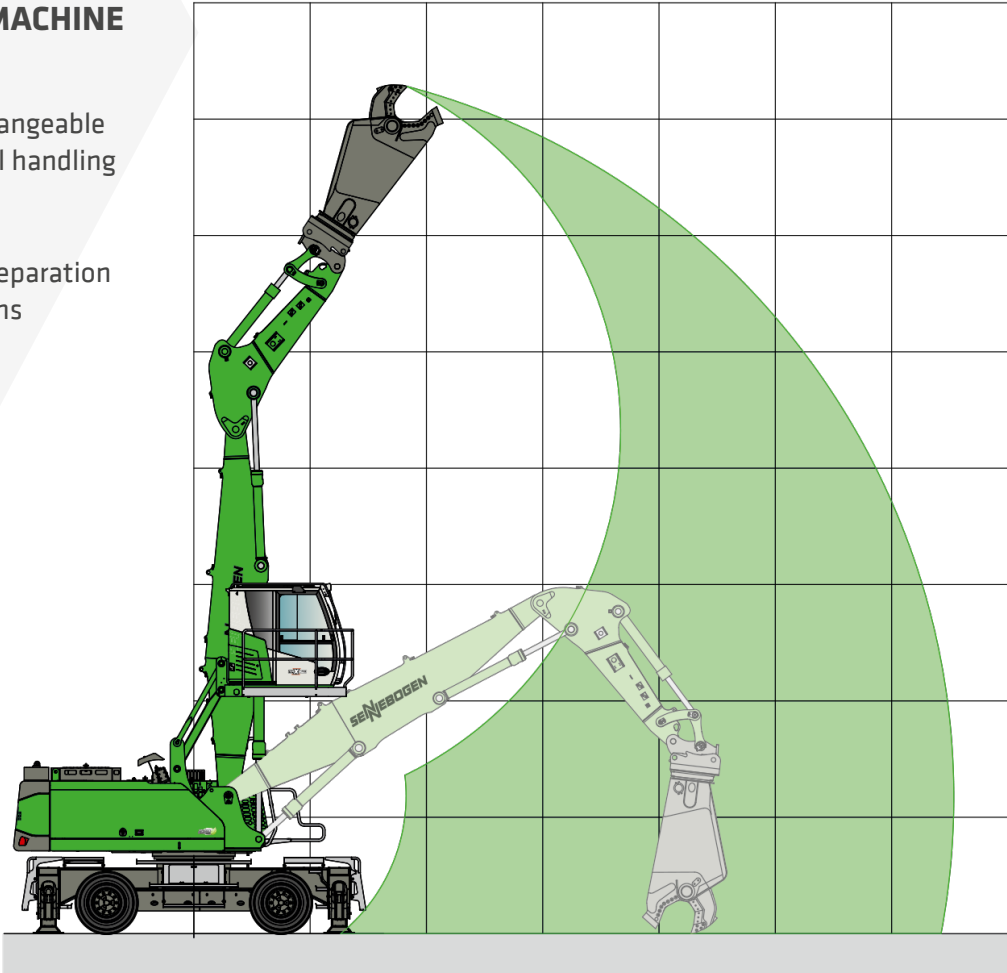
	2ND BOOM					
	824 G / 826 G	825 E	830 E / 830 G	835 E	840 E	850 E
BOOM LENGTH	approx. 6 m	approx. 6 m	approx. 6 m	approx. 7 m	approx. 7 m	approx. 8 m
RECOMMENDED SHEAR WEIGHT	max. 3 t	max. 4.5 t	max. 7 t	max. 8 t	max. 9 t	max. 10 t
HYDRAULIC PACKAGE	(6)*					
MAX. FORWARD SHEAR FUNCTION	400 l/min	400 l/min	500 l/min	700 l/min	700 l/min	800 l/min
MAX. RETURN SHEAR FUNCTION	1100 l/min	800 l/min	1000 l/min	1100 l/min	1100 l/min	1100 l/min



SHEARS ON 3RD BOOM WITH QUICK-CHANGE SYSTEM

VARIABLE USE OF THE MACHINE
AS A TOOL CARRIER:

- ✓ Versatility through interchangeable attachments from material handling to shearing applications
- ✓ Compatibility: ex-works preparation for all quick-change systems
- ✓ Large reaches



	3RD BOOM				
	822 G	824 G / 826 G	825 E	830 E / 830 G	835 E
REACH	approx. 8 m	approx. 9 m	approx. 10 m	approx. 12 m	approx. 12 m
RECOMMENDED SHEAR WEIGHT	max. 1 t	max. 2 t	max. 2.5 t	max. 3 t	max. 4 t
HYDRAULIC PACKAGE	(5a)*				
MAX. FORWARD SHEAR FUNCTION	250 l/min	280 l/min	320 l/min	320 l/min	320 l/min
MAX. RETURN SHEAR FUNCTION	490 l/min	700 l/min	700 l/min	700 l/min	700 l/min



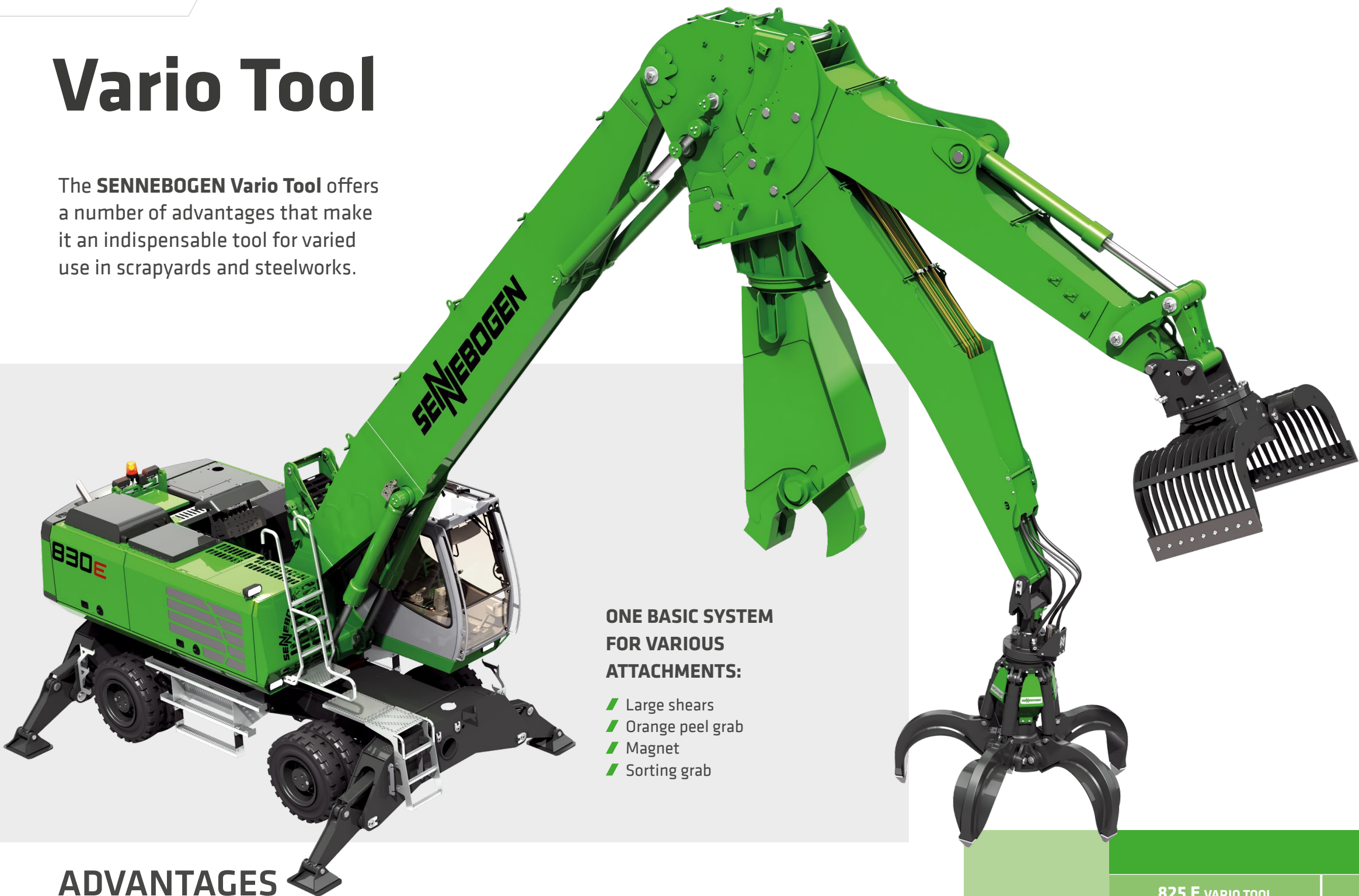
830 E – reach 12 m with 3 t shears



830 E – reach 10 m with 3 t shears

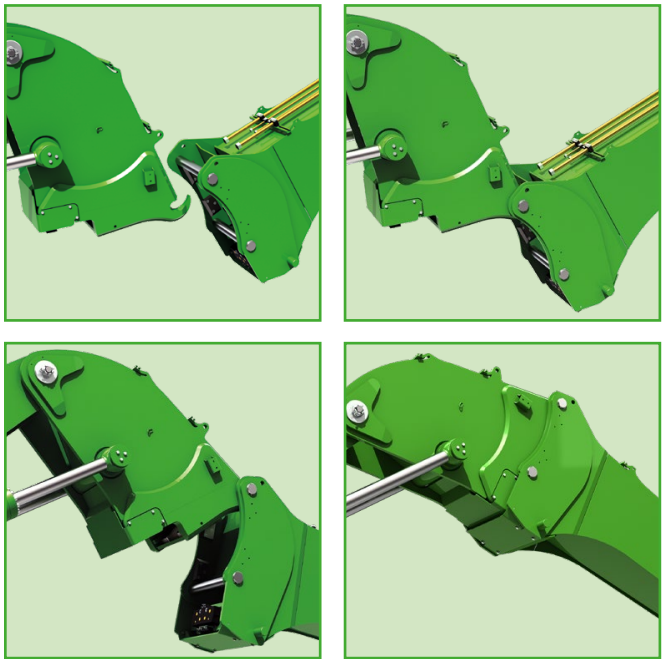
Vario Tool

The **SENNEBOGEN Vario Tool** offers a number of advantages that make it an indispensable tool for varied use in scrapyards and steelworks.



ONE BASIC SYSTEM FOR VARIOUS ATTACHMENTS:

- Large shears
- Orange peel grab
- Magnet
- Sorting grab



COUPLING PROCESS

- The stick /shear can be set down without a set-down frame – directly on the ground
- Quick and safe changing of the Vario Tool Arm from the driver's seat
- Fully automatic coupling
- Proven technology over many years
- The machine is a multi-tool carrier

ADVANTAGES

MAXIMUM VERSATILITY


With the Vario Tool, a single machine can be used for various tasks such as sorting, cutting and loading. This reduces the need to have several specialized machines and optimizes the use of existing resources.


FULLY HYDRAULIC QUICK-CHANGE SYSTEM


- Increases efficiency by enabling quick and safe changes from the driver's seat
- Monitoring of the correct hydraulic and electrical locking by sensors
- Pressureless coupling

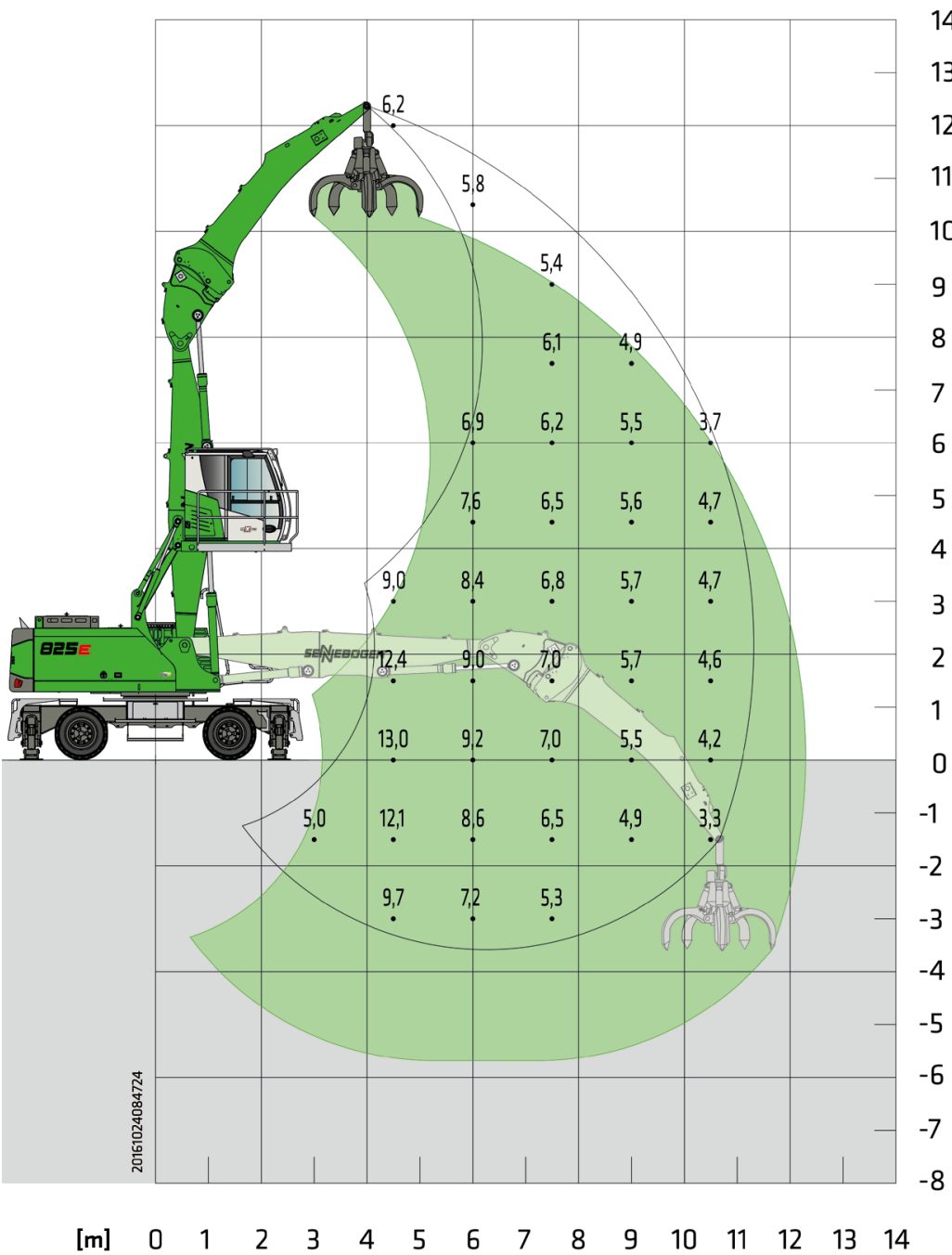
	VARIO TOOL								
	825 E VARIO TOOL			830 E VARIO TOOL			835 E VARIO TOOL		
STICK ATTACHMENT	Grab	ULM	Shears	Grab	ULM	Shears	Grab	ULM	Shears
REACH/WEIGHT	approx. 11 m	approx. 11 m	Weight max. 4 t	approx. 12.5 m	approx. 12 m	Weight max. 5 t	approx. 14 m	approx. 14 m	Weight max. 6 t
HYDRAULIC PACKAGE	Vario Tool								
MAX. FORWARD SHEAR FUNCTION	400 l/min			500 l/min			700 l/min		
MAX. RETURN SHEAR FUNCTION	800 l/min			1000 l/min			1100 l/min		

LOAD RATINGS

 MP26


 5.7 m compact boom
5.7 m grab stick


 Maxcab E270,
hydraulically elevating




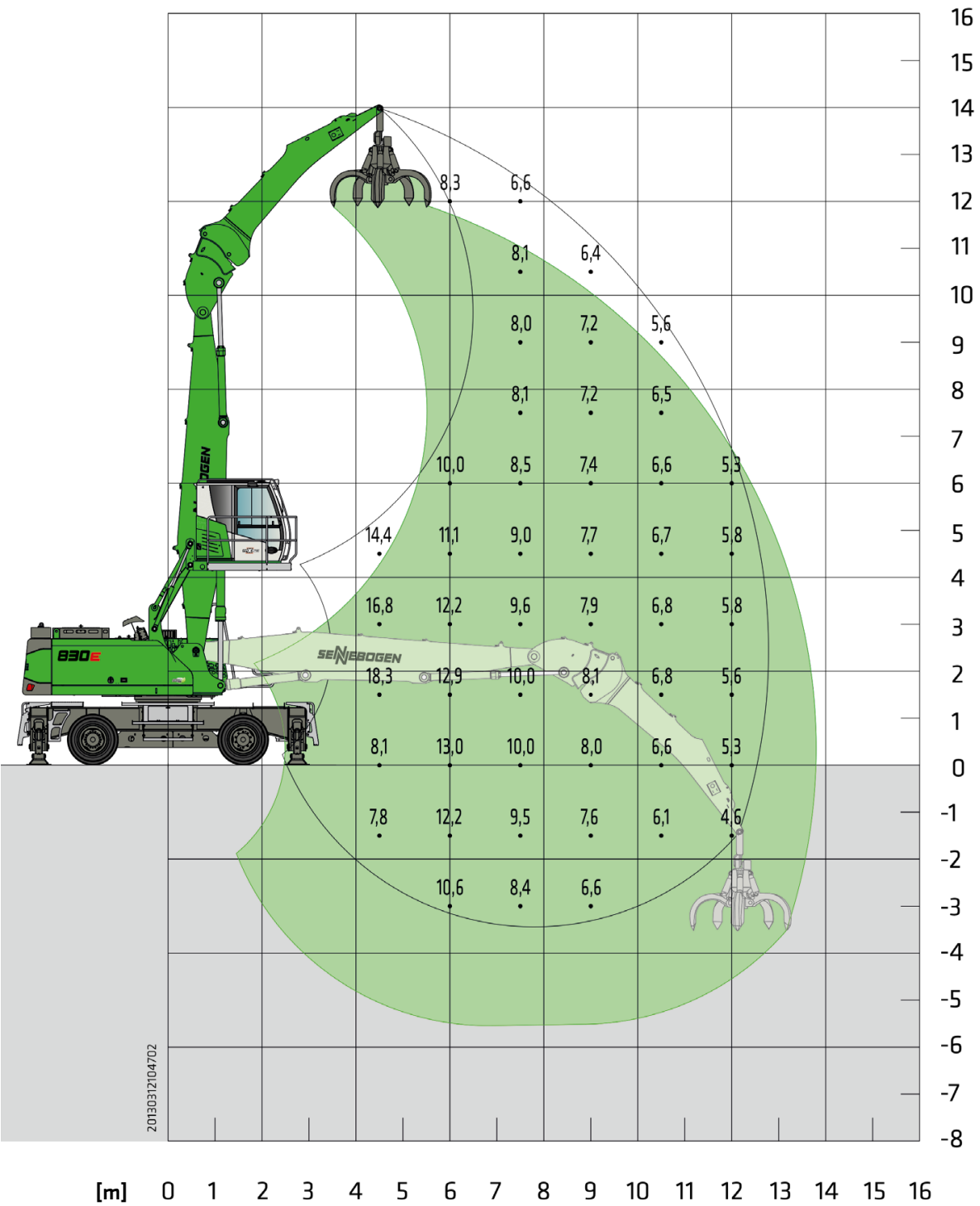
Notes:
All load ratings are given in tons (t) brought to bear at the end of the stick, without tools on firm level ground. Working tools such as grab, magnet, load hook, etc. are included in the specified load ratings. The stated values are 75 % of the static tipping load or 87 % of the hydraulic lifting force according to ISO10567. According to EU standard EN 474/5, hydraulic material handlers used for hoisting must be equipped with a pipe rupture safety device on lifting and stick cylinders and an overload warning device. Load ratings apply to a machine with 4-point outrigger and for 360° slewing.

LOAD RATINGS

 MP30


 7.2 m compact boom
5.7 m grab stick


 Maxcab E270,
hydraulically elevating




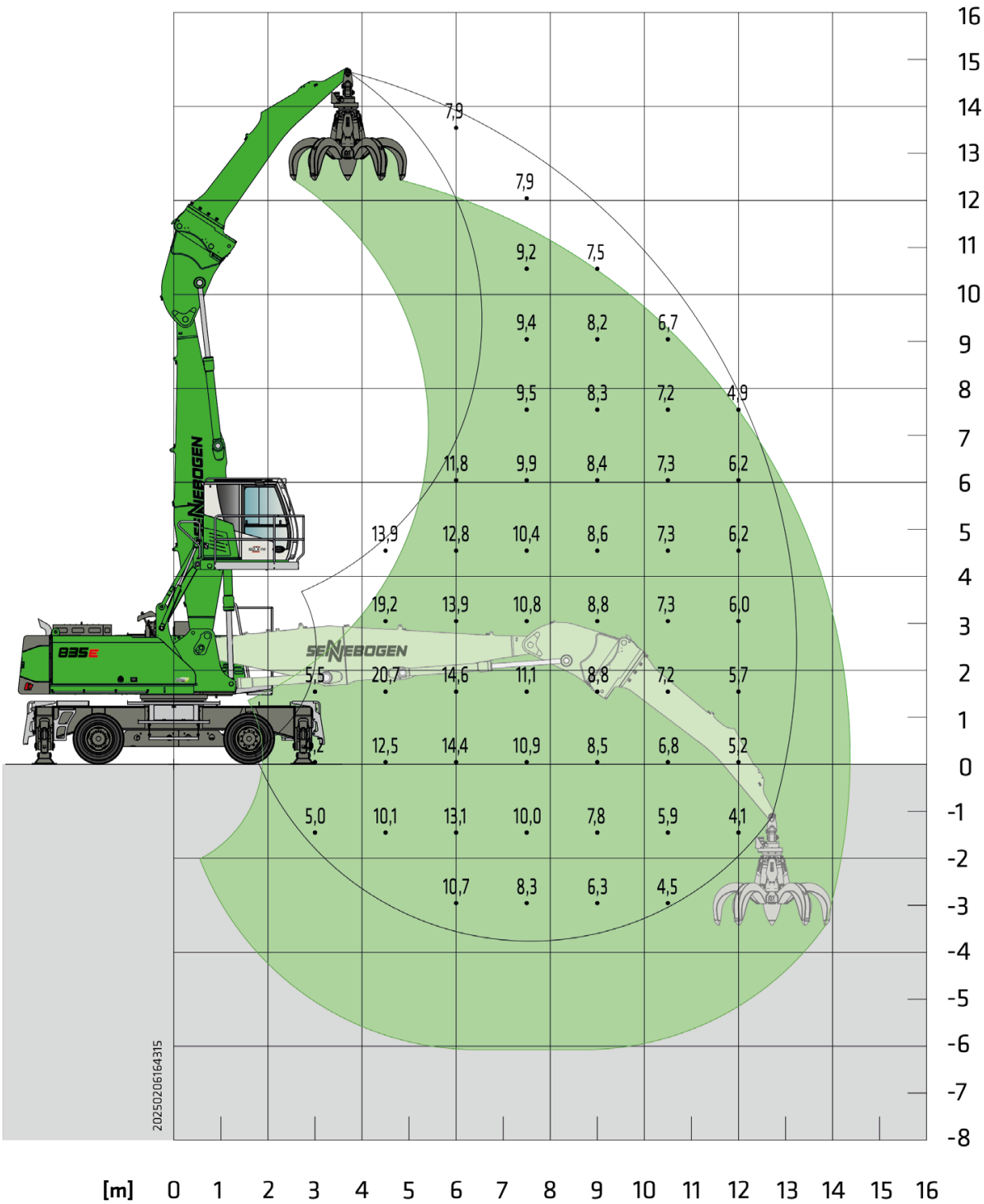
Notes:
All load ratings are given in tons (t) brought to bear at the end of the stick, without tools on firm level ground. Working tools such as grab, magnet, load hook, etc. are included in the specified load ratings. The stated values are 75 % of the static tipping load or 87 % of the hydraulic lifting force according to ISO10567. According to EU standard EN 474/5, hydraulic material handlers used for hoisting must be equipped with a pipe rupture safety device on lifting and stick cylinders and an overload warning device. Load ratings apply to a machine with 4-point outrigger and for 360° slewing.

LOAD RATINGS

 MP41

 7.0 m compact boom
6.3 m grab stick

 Maxcab E270,
hydraulically elevating



Notes:
All load ratings are given in tons (t) brought to bear at the end of the stick, without tools on firm level ground. Working tools such as grab, magnet, load hook, etc. are included in the specified load ratings. The stated values are 75 % of the static tipping load or 87 % of the hydraulic lifting force according to ISO10567. According to EU standard EN 474/5, hydraulic material handlers used for hoisting must be equipped with a pipe rupture safety device on lifting and stick cylinders and an overload warning device. Load ratings apply to a machine with 4-point outrigger and for 360° slewing.



This catalog describes machine models, the scope of equipment of individual models, and configuration options (standard equipment and optional equipment) of the machines delivered by SENNEBOGEN Maschinenfabrik GmbH. Machine illustrations may contain optional and supplementary equipment. Actual equipment may vary depending on the country to which the machines are delivered, especially in regard to standard and optional equipment. All product designations used may be trademarks of SENNEBOGEN Maschinenfabrik GmbH or other supplying companies, and any use by third parties for their own purposes may violate the rights of the owners. Please contact your local SENNEBOGEN sales partner for information concerning the equipment variants offered. Requested performance characteristics are only binding if they are expressly stipulated upon conclusion of the contract. Delivery options and technical features are subject to change. All information is supplied without liability. Equipment is subject to change, and rights of advancement are reserved. © SENNEBOGEN Maschinenfabrik GmbH, Straubing, Germany. Reproduction in whole or in part only with written consent of SENNEBOGEN Maschinenfabrik GmbH, Straubing, Germany.



SENNEBOGEN
Maschinenfabrik GmbH
Hebbelstraße 30
94315 Straubing, Germany
☎ +49 94 21 540-0

➞ www.sennebogen.com

SENNEBOGEN LLC
1957 Sennebogen Trail
Stanley, North Carolina 28164, USA
☎ +1 704 347-4910
✉ sales@sennebogenllc.com
www.sennebogen-na.com

SENNEBOGEN Pte. Ltd.
25 International Business Park
04-11/12 German Centre
Singapore 60 99 16
☎ +65 6562 826-0
✉ info@sennebogen.asia
www.sennebogen.asia

MOVE BIG THINGS