

# INDUSTRIAL LIFT TRUCK SPECIFICATION SHEET

# GTX-725H

Rated Capacity 72,752 lbs. (33,000 kg)

48-in. (1,200 mm) Load Center

187in. (4,750 mm) Wheelbase



Cover image is for example purposes only and may not reflect current features.



# TAYLOR MACHINE WORKS, INC.

Founded in 1927 on the principles of “FAITH - VISION - WORK”, and entrenched with decades of Heavy Industrial Material Handling experience. Taylor meets all of your rugged industrial needs with models and capacities that range from 4,000-lbs to 125,000-lbs. The Taylor GTX-Series features Tier 4 Final engine technology that has increased fuel efficiency while retaining the powerful low-end torque that our customers have come to expect. Taylor’s reputation was built while performing in the harshest industrial environments the Material Handling Industry has to offer. We strive to keep things simple and use appropriate technology that brings value and the Taylor GTX-725H continues that tradition!

you can depend on *Big Red*®

## Performance: †

### GTX-725H

				GTX-725H	
<b>Travel Speed</b>	Maximum Forward	mph (km/h)	17		28
<b>Lift Speed</b>	No Load	fpm (m/s)	65		0.33
	With Load	fpm (m/s)	47		0.24
<b>Lowering Speed</b>	No Load	fpm (m/s)	69		0.35
	With Load	fpm (m/s)	43		0.22
<b>Gradeability</b>	No Load*	%		29	
	With Load*	%		21	
<b>Drawbar Pull</b>	Maximum @ Stall*	lb (kN)	49,233		219
<b>Stability</b>	Comply with ISO 1074	%		Yes	

† NOTE: Performance specifications are based on trucks with standard equipment. Performance specifications are affected by the condition of the vehicle, its components, and the nature and condition of the operating area. If these specifications are critical, the proposed application should be discussed with your Taylor sales representative.



# GTX-725H

## Engine: Optional Engine International Shipments Only

Engine	Make & Model	CUMMINS B6.7				CUMMINS QSB6.7	
	Tier Compliance	EU Stage 5, EPA Tier 4F				Tier 3	
	Fuel - Engine Type	Diesel - 4 Stroke				Diesel - 4 Stroke	
	Output	hp (Kw)	225	168	260	168	
	Gov'n Speed w/Load	RPM	2200			2200	
	Cyl/Displacement	cyl/cu-in (L)	6	408.8	6.7		
	Peak Torque*	ft-lbs/RPM (Nm/RPM)	875	959	1187	959	
<b>Fluids</b>	Fuel Capacity	gal (L)					
	Diesel Exhaust Fluid	gal (L)					
<b>Electrical</b>	Battery	Volt/Ah (2 batteries)	24 / 2300			24 / 2300	
	Alternator	Amps	90			90	

† This engine requires (DEF) Diesel Exhaust Fluid and features (SCR) Selective Catalytic Reduction, (DPF) Diesel Particulate Filter, diagnostic and maintenance monitor, fuel/water separator and engine/trans. protection systems. Emission certification: US EPA Tier 4 Final

†† Standard features are electronic diagnostic and maintenance monitor, fuel/water separator and engine/transmission protection systems. Emission certification: US EPA Tier III, Carb Tier III, EU Stage III. Attention: Taylor models equipped with U.S. EPA Tier 3 certified engines are available for sale outside of the highly regulated countries of North America, Europe and Japan. Refer to the off-road diesel engine emission regulations of the specific country in question for verification.

## Transmission:

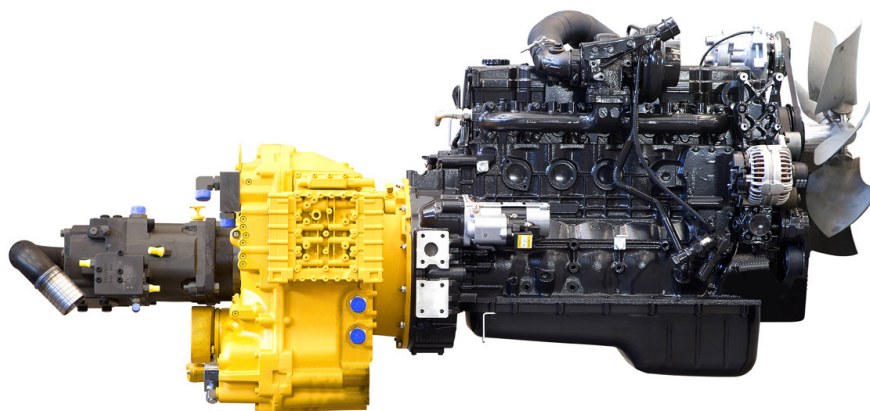
Trans.	Make & Model	ZF 3WG191				ZF 3WG191	
	Number of Speeds	Fwd/Rev	3/3			3/3	
	Gear Change		Hand - Joystick			Hand - Joystick	

The 3-speed automatic powershift transmission is modulated, fully reversing and features inching capability. Directional controls are actuated through joystick mounted push buttons. Temperature control is achieved through a separate air-to-oil cooler. The filler-pipe dipstick and large, heavy-duty oil filter are easily accessed for maintenance.

## Axles:

Drive Axle	Make & Model	Wet Disc	Kessler D91		Kessler D91	
<b>Steer Axle</b>	Make & Model		Taylor		Taylor	

The bolted heavy-duty planetary drive axle utilizes wet disc brakes.



ZF 3WG191

CUMMINS B6.7

## Lift Truck Dimensions:

General		Model	Manufacturer's Designation	GTX-725H		
	Capacity		Rated Capacity	lb (kg)	72,752 33,000	
	Load Center		Distance	in (mm)	47.2 1,199	
	Wheelbase	L	Distance	in (mm)	187.0 4,750	
	Power Type		Diesel or LPG		Diesel	
Dimensions	Upright Lift	H4	Lift Height (Ground to Top of Fork)	in (mm)	157.5 4,001	
	Forks		Thickness	in (mm)	4.3 109	
			Width	in (mm)	11.8 300	
			Length	in (mm)	94.5 2,400	
	Tilt Angle		Standard Upright - FWD/Backward	Degrees	6° / 11°	
	Overall Dim.		Length Without Forks	in (mm)	273.6 6,949	
			Width (Standard Tires)	in (mm)	114.2 2,901	
		V	Width (Max Distance Between Forks)	in (mm)	112.2 2,850	
		V	Width (Min Distance Between Forks)	in (mm)	12.6 320	
		H3	Mast Height Minimum	in (mm)	159.4 4,049	
		H5	Mast Height Maximum	in (mm)	238.2 6,050	
		H7	Height (Top of Seat)	in (mm)	99.2 2,520	
		H6	Height (Top of Cab)	in (mm)	141.7 3,599	
	Load Distance	L2	Center of Wheel to Face of Forks	in (mm)	47.2 1,199	
	Turning Radius	R1	Minimum Outside	in (mm)	230.0 5,842	
R2		Minimum Inside	in (mm)	27.6 701		
Aisle Width	D1	(Add Load Length for 90° Stacking)	in (mm)	401.6 10,201		
Weight	Total Apprx.		Standard Truck	lb (kg)	97,003 44,000	
	Axle Loading		Static with Rated Load (Front)	lb (kg)	155,426 70,500	
			Static with Rated Load (Rear)	lb (kg)	14,330 6,500	
			Static with No Load (Front)	lb (kg)	45,195 20,500	
			Static with No Load (Rear)	lb (kg)	51,809 23,500	
Wheels & Tires	Tire Type		Cushion or Pneumatic (Front / Rear)		Pneumatic / Pneumatic	
	Wheels		Number (Front / Rear)		4 / 2	
	Tires		Number (Front / Rear)			4 / 2
			Size (Front)			16.00 X 25 - 20 PR
			Size (Rear)			16.00 X 25 - 20 PR
	Tread	T1	Center of Duals (Front)	in (mm)	97.2 2,469	
			Center of Tires (Rear)	in (mm)	98.0 2,489	
	Ground Clearance	M1	Lowest Point (No Load)	in (mm)	7.1 180	
		M2	Center of Wheelbase (No Load)	in (mm)	11.8 300	
	Brakes			System Type		Wet Disc
			Control Method (Service / Parking)		Foot / Hand	
			Operation Method (Service / Parking)		Hyd / Spring	

# GTX-725H

## Mast Dimensions:

<b>13' Duplex</b>	Standard	H4	Lift Height (Ground to Top of Fork)	in (mm)	157.5	4,001
		H3	Overall Height (Lowered)	in (mm)	159.4	4,049
		H5	Overall Height (Raised)	in (mm)	238.2	6,050
<b>16.4' Duplex</b>	Optional	H4	Lift Height (Ground to Top of Fork)	in (mm)	196.8	4,999
		H3	Lift Height (Ground to Top of Fork)	in (mm)	179.1	4,549
		H5	Overall Height (Raised)	in (mm)	227.6	5,781
<b>19.6' Duplex</b>	Optional	H4	Lift Height (Ground to Top of Fork)	in (mm)	236.2	5,999
		H3	Overall Height (Lowered)	in (mm)	198.8	5,050
		H5	Overall Height (Raised)	in (mm)	316.9	8,049
<b>19.6' Triplex F.F.L.</b>	Optional	H4	Lift Height (Ground to Top of Fork)	in (mm)	236.2	5,999
		H3	Overall Height (Lowered)	in (mm)	157.5	4,001
		H5	Overall Height (Raised)	in (mm)	318.9	8,100
		H2	Free Lift	in (mm)	70.9	1,801
<b>23' Triplex F.F.L.</b>	Optional	H4	Lift Height (Ground to Top of Fork)	in (mm)	275.6	7,000
		H3	Overall Height (Lowered)	in (mm)	177.2	4,501
		H5	Overall Height (Raised)	in (mm)	374.0	9,500
		H2	Free Lift	in (mm)	78.7	1,999

## Carriage Dimensions:

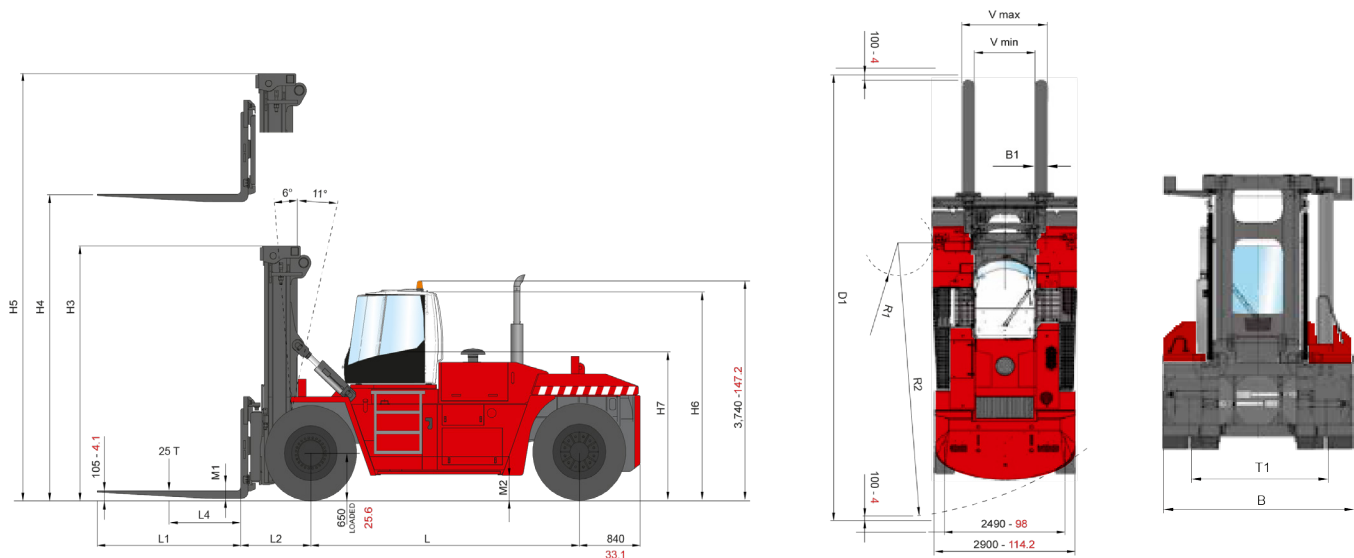
**Carriage**      Standard      Hydraulic Carriage with side-shift and fork positioning

The mast and carriage main rollers are common and use shielded roller bearings.

## Fork Dimensions:

<b>Forks</b>	Standard	Thickness	in (mm)	4.3	109
		Width	in (mm)	11.8	300
		Length	in (mm)	94.5	2,400

Optional fork or coil ram configurations are available but may effect the rated capacity of the standard truck and could require additional equipment. Any optional fork or coil ram application should be discussed with your Taylor sales representative.



Dimensions mm / in

## Standard Features - GTX-725H

- Two stage 157" telescopic mast with lift accumulators
- Hydraulic Carriage with fork positioning and side-shift
- 4.3-in(110mm) x 11.8-in(300mm) x 95-in(2400mm) Forks
- CUMMINS B6.7 (225 H) - EU Stage 5, EPA Tier 4F diesel engine
- Dry-type air cleaner w/safety element & restriction indicator
- ZF Transmission 3 speed forward, 3 speed reverse
- Powertrain protection system for engine and transmission
- Kessler D91 heavy duty drive axle with wet disc brakes
- Taylor welded steel steer axle
- 16.00 X 25 – 20PR bias pneumatic drive and steer tires (high load)

## Chassis

- Welded high tensile steel chassis structure in accordance with DIN 15018
- Two rear view mirrors mounted on the mudflaps
- Replaceable bolt-on steps and handrails
- Lockable Fuel Cap
- Service bay with easily accessible filters, deep sticks, and oil refill points for engine and transmission.

## Cab

- Climate Controlled operator cabin includes right hand and left hand access doors, with rear exit window, dome light and and two circulation fans.
- Cabin heater (40,000 BTU/h) with front and rear defrosting, cab pressurizer and fresh air intake
- Cabin air conditioning (cooling power 9kW or 30.000 BTU/h) with open door auto stop.
- Front, Rear, and Top Glass Wipers with Washers
- Air-suspended and heated seat with orange 3-point seatbelt
- Multifunction joystick mounted on adjustable arm rest (electronic spreader control with capacitive safety protection)
- Operator Presence System with timed idle and neutral shutdown
- 7-in touch screen color display with on-board diagnostics
- Dual interior rear-view mirrors; Dual fender mounted exterior mirrors
- Rear visibility aid camera system
- Electronic system to protect against overtilting and overloading
- All wiring is color and number coded.
- Operator Platform conforms to to ISO 6055 (FOPS) standards

## Electrical

- 24-volt electrical system with 90 amp alternator
- Dual heavy-duty batteries
- Battery disconnect/lock-out switch
- (4) forward facing LED work lights (cab mounted)
- (2) LED work lights (mast mounted)
- Circuit breakers with heavy duty connectors (no automotive type fuses)
- Breaker reset switches
- Key-type anti-restart ignition switch
- Dual electric trumpet horns (116 dBA)
- Keyswitch-actuated amber strobe light
- Reverse-actuated warning alarms

## Vehicle Information Package

- Operators Guide
- Maintenance and Service documentation
- Safety Check Manual and Video



Fully Enclosed 2-Door Cab with Multiple Climate Control Configurations Available  
(featured cab is shown with available options)



Ergonomic & Serviceable Joystick (Standard)



Fully Adjustable Air Suspended and Heated Seat (Standard)



Seven Inch Display (Standard)



Adjustable, Ergonomic Armrest that is Independent from Seat (Standard)



Industry's Toughest Steer Axle (Standard)



Vehicle Information Package "VIP" (Standard)

## NEED OPTIONS?

Just ask one of our Taylor Specialist.

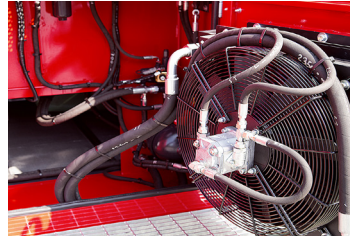
Taylor Machine Works was founded on the promise of meeting our customer's needs. The signage on our original facility in 1927 stated "We Engineer and Build What You Need" and those ideals still ring true today! From multiple Mast, Carriage and Fork configurations to Special Attachments that are unique to your business, we will step forward to meet the challenge. We have a dedicated engineering group focused on meeting special request from our customers. This ensures that you have the exact equipment you need to tackle your rugged applications. With hundreds of options readily available for our trucks, and the ability to custom engineer any other need that arises, Taylor Machine Works is here ready to serve.

## Durability and Service

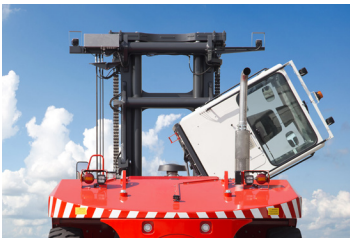
Taylor Lift Trucks are designed with ease of maintenance and serviceability as a key priority. With today's engine and emissions requirements, daily maintenance checks and timely periodic service are the key to your equipment's longevity. All GTX lift trucks are certified by a major international third-party inspection and verification institute and are fully compliant with standard DIN 15018/H2 B4 Classes. This machine is engineered to resist the heaviest applications in the harshest environments. The GTX lift truck's modular design is utilized throughout the range. This design increases reliability and parts availability. The standard tilting cab provides complete access to the engine and transmission bays. To maximize service convenience, fluid level check and refill points are easily accessible by a wide and safe standing platform. By using CAN-BUS components, the electronics have been reduced to a minimum. They are safely enclosed in an IP67 proof casting, and the cabling is certified to -40 degree temperature.



FOPS Compliant Top Glass for optimal Driver Visibility (Standard)



Large Hydraulic & Transmission Oil Cooling System



Tilting Cab for Easy Access to Drive Train & Hydraulics



All-Weather Proof Connectors and Junction Boxes (Standard)



## Hydraulics

The GTX-725H incorporates electronic controlled hydraulics. Load sensing distribution valves, managed by the Sixth Sense software, react quicker to power demand and modulation than conventional systems. Sixth Sense is included in the standard Energy Savings Solutions (ESS) package that eliminates unnecessary fuel consumption without impairing productivity. Other standard features on the ESS package are smart engine RPM management, hydraulic driven aircon compressor, and cab temperature management as well as thermostatically controlled fans.

## On Board Computer System

All the GTX machines are equipped with a powerful on-board computer that provides the driver with operational aids and enhanced safety awareness. The system also allows a detailed user-friendly diagnostic of the machine's main systems and records functional and operational events. The core of the system is its color, extra wide 7-inch display. Interaction with the system is made through the function buttons (located on the sides) and the navigation buttons (located on the bottom).



**DISCLAIMER:**

This vehicle is certified to meet the applicable design and performance criteria required for Powered Industrial Trucks in OSHA Safety and Health Standards, Title 29 CFR, Part 1910.178, and the applicable design and performance requirements in ANSI B56.1 that were in effect at the time of manufacture. These standards also apply to the user and should be adhered to while operating this vehicle.

All specifications are subject to change without notice. Some operating data may be affected by the condition of the vehicle, how it is operated and the nature and condition of the operating area. If these specifications are critical, contact the factory.



[www.taylorsuddenservice.com](http://www.taylorsuddenservice.com)

## 24/7 Worldwide Support

No-one can match our record for service and reliability.  
Unbeatable customer service, backed by over 90 years of customer satisfaction.



Taylor Machine Works, Inc.  
3690 North Church Avenue  
Louisville, MS 39339  
[www.taylorforklifts.com](http://www.taylorforklifts.com)