

SENEBOGEN



231 kW (Stage V)
227 kW (Stage IIIa)



43.9 t



11.3 m



MAX CAB

735E

Mobile material handling machine

Stage V

735E Advanced. The E-Series.



1974: Timber handling machine with elevated cab

What makes up the E-Series

- More than 65 years of experience in designing and constructing hydraulic material handling machines
- Uncompromisingly high performance in all areas: Focus on material handling
- Technology that can be mastered: High-quality components without over-engineering
- Long product service life and high value retention

Your top benefits

1

Green Efficiency

Save fuel - reduce operating costs
Work quietly - protect operator and environment



2

Peak performance

Durable mechanical systems - stressed parts optimized
High speeds - high load capacities

3

Maximum usability

Comfortable Maxcab operator cab - relaxed work
SENCON - work program selection made easy



4

Maximum safety

Safe entry and exit - no-slip steps
State-of-the-art camera - entire work area in view

5

Maintenance and service made easy

SENNEBOGEN Control System SENCON - easy fault diagnosis
Easy Maintenance - clear labeling

6

Consultation and support in your area

3 production sites - 2 subsidiaries
more than 150 sales partners - worldwide and also in your area





Designed for log handling:

- Boom linked at the rear for optimal weight distribution
- Eightfold tyres guarantee the best steadiness
- Smooth and powerful drive experience
- Robust undercarriage for trailer application

735E The log handling machine

Fully equipped standard

Optimal performance

- Powerful drives for high driving and handling performance, even for blended movements
- Large hydraulics and perfectly tuned cooling for ideal working conditions
- Low dead weight, but high load capacity

Small ballast - compact dimensions

- Low front and rear radius for optimal maneuverability, especially in tight spaces

Powerful, automotive driving

- Robust undercarriage with 2 powerful, quiet travel motors
- Can pull up to 30 t
- Maximum driving convenience with parking brake and automatic brake release
- Driver assist systems to automatically detect and switch direction of travel and direction of steering
- Top stability thanks to 8 tires





Advantages of rear boom linkage

Ideal weight distribution thanks to center of gravity in machine center



Smaller counterweight



Less weight for accelerating and braking



Compact dimensions



= save up to 20% fuel



Best maneuverability especially in tight spaces

Perfect overview

- Rigid cab height elevation up to 1.0 m or 1.5 m (option)
- Rear boom gives unobstructed view from cab
- Right and rearview cameras

Maximum safety

- Robust, full protective grating for cab
- Safe access to cab and uppercarriage thanks to stable grip handles and no-slip surfaces
- Sliding door for convenience and safety
- Stable railing on uppercarriage

Green Efficiency

- Complies with Emission Standard V, DEF clean exhaust technology
- Economical thanks to EcoMode, automatic idle and automatic start-stop



Work	Idle		Stop
1800 ECO RPM	1400 RPM	800 RPM	0 RPM
0 s	5 s	8 s	5 min



The premium cab.



Features

- optimum cab climate with automatic air conditioning system, partial tinted glass
- pleasant and equal temperature dispersion by means of 9 nozzles
- panoramic view
- climatic comfort seat with air suspension and air conditioning*
- very quiet through optimized noise insulation
- Highest safety & comfort with sliding door, wide door opening
- ergonomically arranged operating controls for fatigue-free and relaxed working
- 12 V, 24 V, and USB charging sockets
hands-free telephone preparation,
document box
- various options: electric cooler behind the driver seat, protective covers, seat air conditioning
- No-slip ladders for safely accessing the machine
- Full, protective grating in series
- panoramic view
- pleasant work environment thanks to low noise emissions

Our SENNEBOGEN joysticks

- consoles and ergonomic joysticks that move with the seat
- pleasant grip through ergonomic design
- precise control of all movements through direct and sensitive function activation
- quick access to all operating controls through optimized design of all push-buttons and switches

735E Maintenance and service made easy.



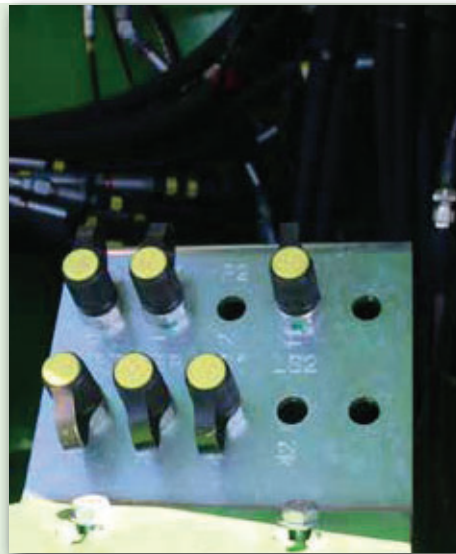
Optimized for maintenance

- Fast and easy diagnosis thanks to straightforward and clearly labeled electrical distributor
- Easy access to all service points on the machine
- Automatic central lubrication for equipment and slewing gear



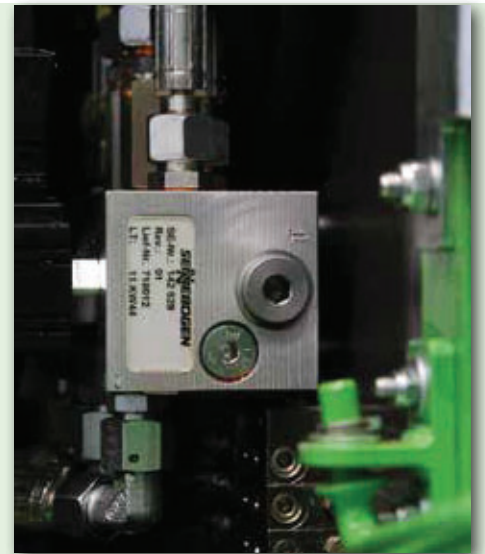
SENNEBOGEN Hydro Clean*

- Optimal protection of hydraulic components thanks to 3 µm micro-filter
- Cleaner hydraulic oil, longer service life



Central measuring points

- Easily accessible
- Quickly inspect entire hydraulic system



Clear labeling

- All parts labeled with a unique part number
- Easy and reliable spare parts ordering

* Option

735E Technical data - equipment

MACHINE TYPE

Model (type) **735**

ENGINE

Power **Stage V:**
Rated Power: 231 kW at 2100 rpm
237 kW at 2000 rpm

Stage IIIa:
Rated Power: 227 kW at 2000 rpm

Model **Cummins L 9**
Direct injection, turbo charged, charge air cooler, reduced emissions, Eco Mode, idle automation, stop automation, fuel pre-warming

Cooling Water-cooled, cooler fan reversal

Diesel filter With water separator and heating system

Air filter Dry filter with integrated pre-separator, automatic dust discharge, main element and safety element, contamination indicator

Fuel tank **560 l**

DEF tank **75 l**

Electr. system **24 V**

Batteries **2 x 150 Ah**, battery disconnect switch

Options

- Engine block pre-warming
- Electr. fuel pump
- Jump-start terminals

UPPERCARRIAGE

Design Torsion-resistant box design, precision crafted, steel bushings for boom bearing arrangement
Extremely service-friendly concept, engine installed in the longitudinal direction

Central lubrication Automatic central lubrication for equipment and slewing gear

Electrical Central electrical distributor, battery disconnect switch

Cooling system 3-circuit cooling system with high cooling output, thermostatically regulated fan drive for oil cooler and water cooler, fan reversal for cleaning

Safety

- Perimeter uppercarriage railing
- Emergency control of main functions

Options

- Slewing gear brake via foot pedal
- Light packages with LEDs
- Electrical hydraulic tank pre-warming
- Low-temperature packages
- Telematic system SENtrack DS

HYDRAULIC SYSTEM

Load sensing / LUDV hydraulic system, hydraulic, pilot-controlled work functions, load limit sensing control

Pump type Variable-displacement piston pump in swash-plate design, load pressure-independent flow distribution for simultaneous, independent control of work functions

Pump control Zero-stroke control, on-demand flow-control - the pumps only pump as much oil as will actually be used, pressure purging, load limit sensing control

Delivery rate **maximum 740 l/min**

Operating pressure **to 350 bar**

Filtration High-performance filtration with long change interval

Hydraulic tank **390 l**

Control system Proportional, precision hydraulic activation of work movements, 2 hydraulic servo joysticks for work functions, supplemental functions via switches and foot pedals

Safety Hydraulic circuits with safety valves, secured emergency lowering of the equipment at engine standstill

Options

- Bio-oil filling - ecologically worthwhile
- Tool Control for programming up to 10 tools in pressure / rate
- 3 µm hydraulic micro-filter - SENNEBOGEN HydroClean

SLEWING DRIVE



Gearbox Compact planetary gear with slant axis hydraulic motor, integrated brake valves


Parking brake Spring-loaded disk brake


Slewing ring External gear slewing ring with 360° protection and pinion tooth lubrication


Slewing speed 0-7 rpm, variable

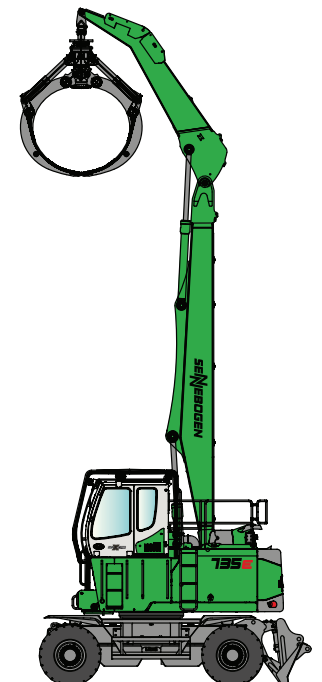
735E Technical data - equipment

 CAB 	
Cab type	Rigid cab height elevation 1 m
Cab equipment	Sliding door, excellent ergonomics, climate automation, seat heater, air-suspension comfort seat, fresh air filter / circulating air filter, joystick steering, 12 V / 24 V connections, SENCON
Options	<ul style="list-style-type: none"> ■ Rigid cab height elevation 1.50 m ■ Auxiliary heating system with timer ■ Cab active-charcoal filter inside air/outside air, ideal for waste recycling applications ■ Steering wheel steering with adjustable steering column ■ Sliding window in the operator door ■ Armored glass windshield, additional safety ■ Armored glass roof window, additional safety ■ Safety side window and rear window ■ Sunblind for roof window and windshield ■ Radio ■ Hydraulic folding rigid cab elevation ■ Platform next to cab ■ Active seat climatisation

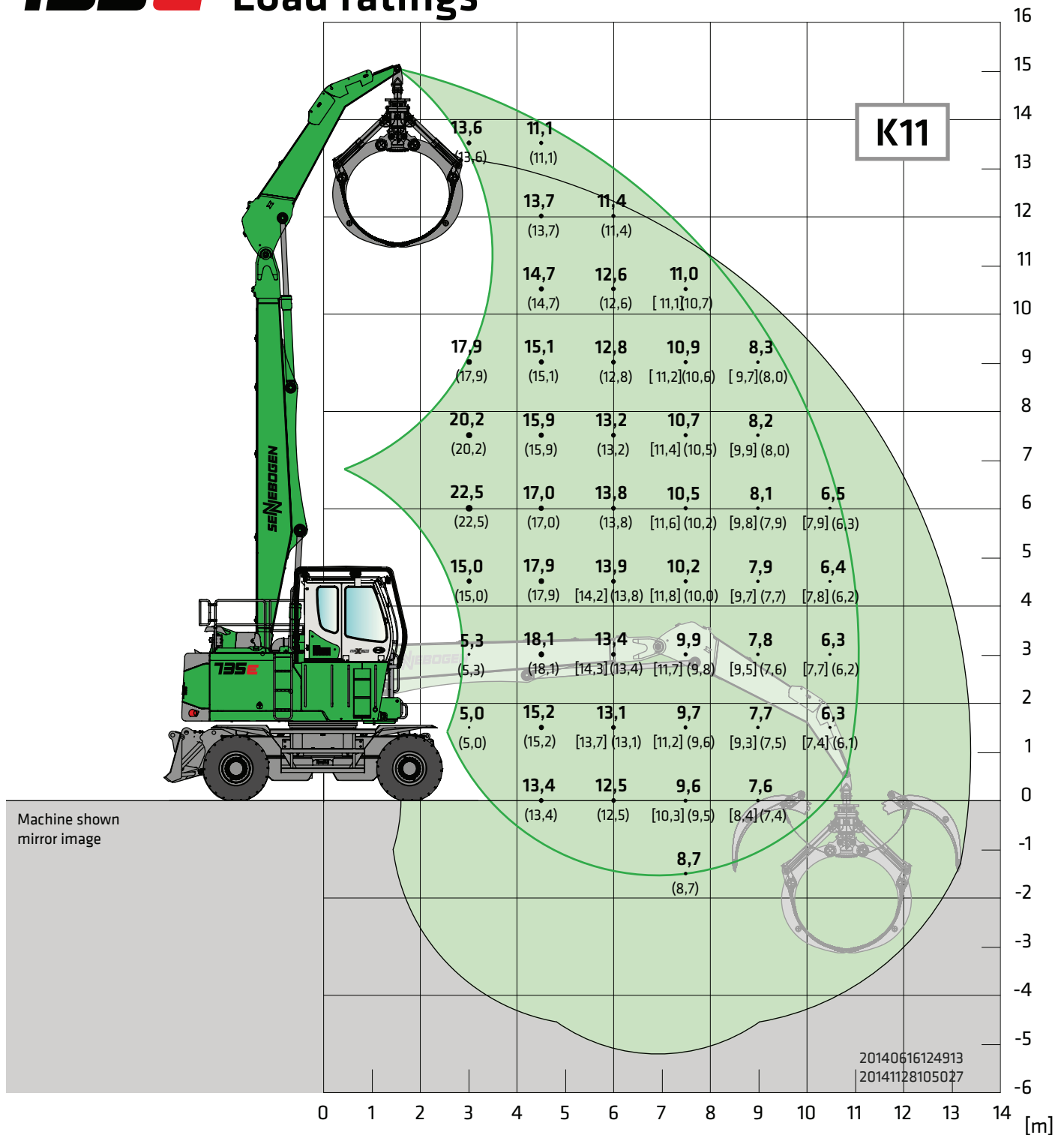
 UNDERCARRIAGE	
Design	Stable welded construction in box design, type MF37E
Drive	All-wheel drive powered by two direct-mounted variable-displacement hydraulic engines incl. automatically operated brake valve. Strong planetary axles with integrated steering cylinders on both the front and rear axle, dual-circuit drum brake system
Parking brake	Speed monitoring disc brakes as parking brake with hill start assist
Tires	14.00-24 , 8x
Speed	0-20 km/h variable
Options	<ul style="list-style-type: none"> ■ Preparation for trailer hitch ■ Rear shovel plate ■ Fenders

 ATTACHMENTS	
Design	Decades of experience, state-of-the-art computer simulation, highest level of stability, longest service life, large-dimensioned and low-maintenance bearing points, sealed special bearing bushes, precision-crafted, quick-release couplings on the connections - open/close/rotate grapple
Cylinders	Hydraulic cylinders with high-quality sealing and guide elements, end position damping, sealed bearing points, pipe fracture safety valves for the hoist and stick cylinders
Options	<ul style="list-style-type: none"> ■ Ball valves on the hydraulic lines

 OPERATING WEIGHT	
Mass	Approximately 43,900 kg basic machine 735 M with dozer blade, incl. 3 m ² grab
Note	The operating weight varies depending on the model.



135E Load ratings



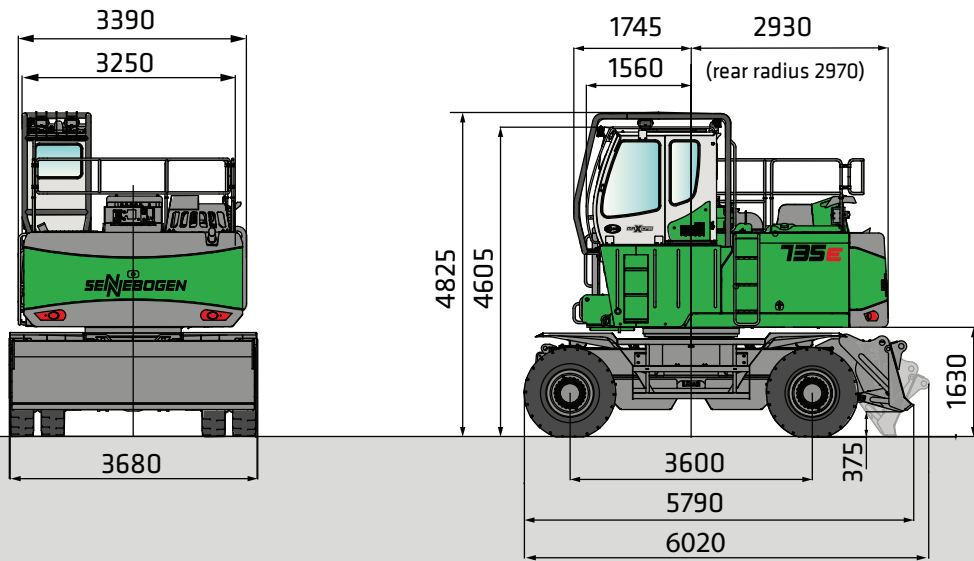
Undercarriage	MF37	Compact boom	8.2 m	Cab	Maxcab, 1 m rigid elevation
		Grab stick	4.7 m		

All load ratings are specified in tons (t) and apply at the end of the stick, without attachment, on a load-bearing, solid and level substrate. Attachments such as grapple, load hook, et cetera are part of the specified load ratings. The specified values apply to stationary implementation at a work range of 360°, on wheels without outrigger support and with blocked pendulum axle. The values in square brackets [] apply to stationary implementation at an uppercarriage position longitudinal to the undercarriage, on wheels, without outrigger support, and with blocked pendulum axle. In accordance with ISO 10567, they are 75% of the static tipping load or 87% of the hydraulic lifting force. The values in parentheses () apply to mobile implementation at an uppercarriage position longitudinal to the undercarriage, on wheels, and activated pendulum axle. In accordance with DIN EN 474-5 they are 60% of the static tipping load. If the machine is operated in stationary mode in hoist implementation, then in accordance with DIN EN 474-5, the machine must be equipped with pipe fracture safety devices on the hoist cylinders of the boom and an overload warning device.

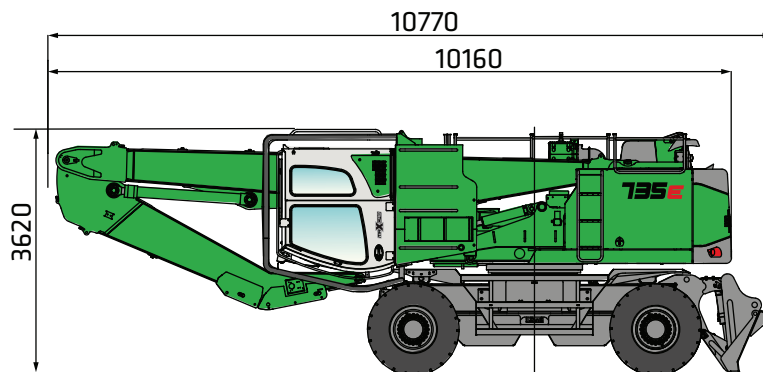


735E Dimensions

Transport width 3680 mm

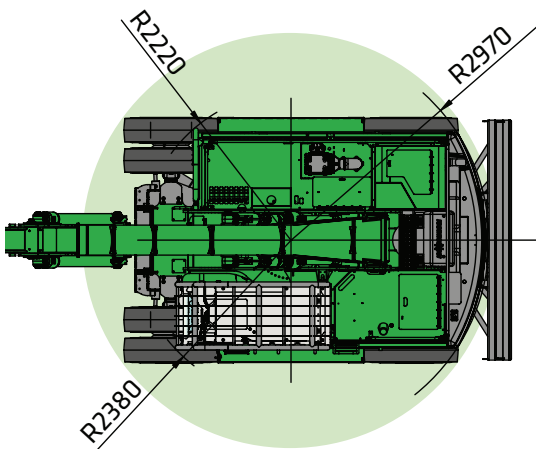


735 MHD with 1 m rigid forward-folding cab, undercarriage type MF37

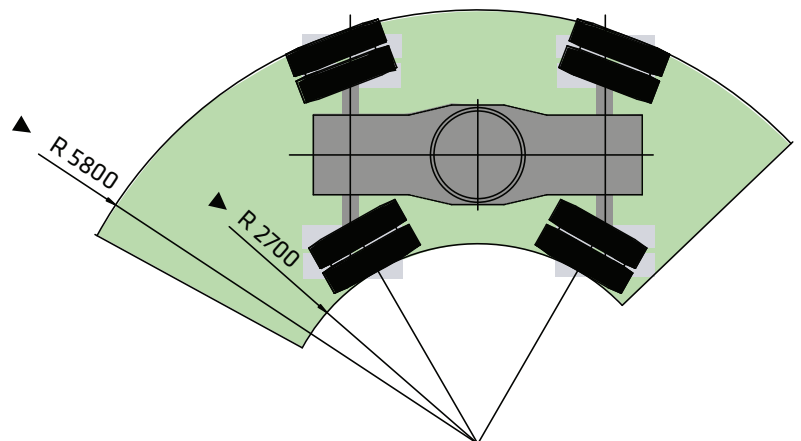


* Remove front left fender (option) for transport

735 MHD transport dimensions

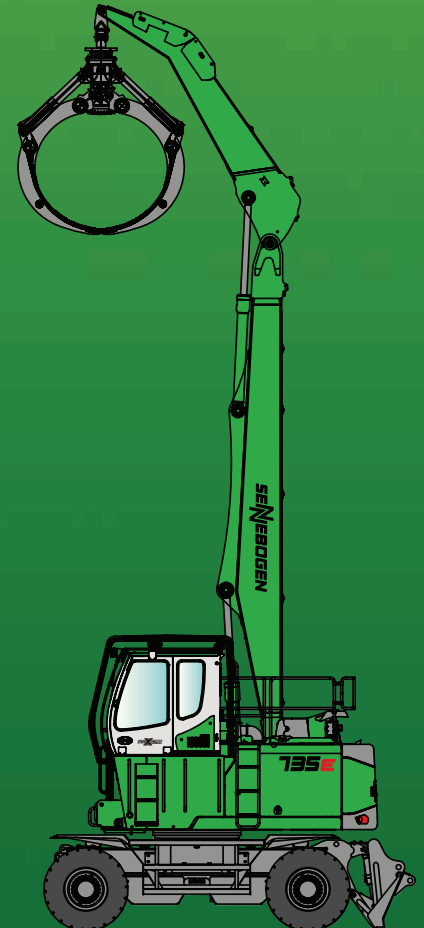


735 M Slewing radius



735 M Turning radius

735E



This catalog describes machine models, scopes of equipment of individual models, and configuration options (standard equipment and optional equipment) of the machines delivered by SENNEBOGEN Maschinenfabrik. Machine illustrations can contain optional equipment and supplemental equipment. Actual equipment may vary in a tolerance range depending on the country to which the machines are delivered, especially in regard to standard and optional equipment

All product designations used may be trademarks of SENNEBOGEN Maschinenfabrik GmbH or other supplying companies, and any use by third parties for their own purposes may violate the rights of the owners.

Please contact your local SENNEBOGEN sales partner for information concerning the equipment variants offered. Requested performance characteristics are only binding if they are expressly stipulated upon conclusion of the contract. Delivery options and technical features are subject to change. Errors and omissions excepted. Equipment is subject to change, and rights of advancement are reserved.

© SENNEBOGEN Maschinenfabrik GmbH, Straubing/Germany. Reproduction in whole or in part only with written consent of SENNEBOGEN Maschinenfabrik GmbH, Straubing, Germany.

SENNEBOGEN

SENNEBOGEN
Maschinenfabrik GmbH
Sennebogenstrasse 10
94315 Straubing, Germany

Tel. +49 9421 540-144/146
marketing@sennebogen.de

Item no. 186167
735MHD-E-0115w-021510-061510-091610-111710-031910

GO FOR GREEN

 www.sennebogen.com