

KRÖGER

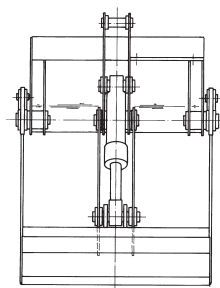
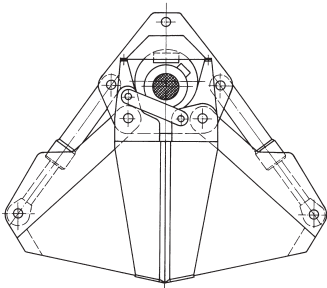
GREIFERTECHNIK

Applications

In sea and inland harbours, in stockyards, for all types of bulk goods transshipment. Compact model, the alternative to the MZG type for inter-ship, ship-to-warehouse/wagon/silo transshipment. For many different types of crane installation with control systems designed to operate motor-driven hydraulic grabs.

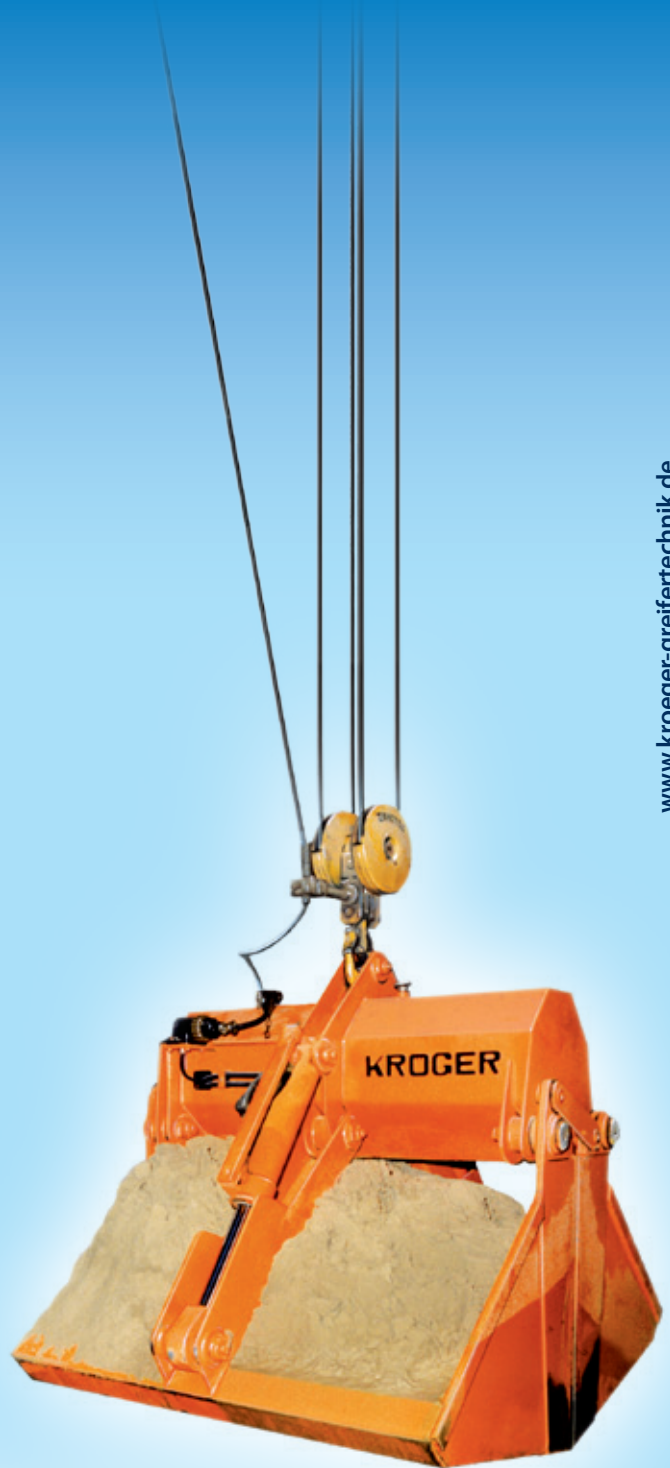
Technical design

- Designed as loading grab and ship unloading grab with retracted rotation point mounting to grip under the ship's gangboard
- Weight-optimised construction and maximum volume for optimum use of crane's lifting capacity
- Self-locking grab suspension for crane hook
- **Grab drive:**
 - Horizontal arrangement of electro-hydraulic drive assembly with high-pressure axial piston pump
 - Control of the closing and opening movement by clockwise or anti-clockwise rotation of the electric motor (reversing control). The electric motor is only switched on during the closing or opening movement
- **Grab shells:**
 - Material: S355J2+N
- Grab joints mounted with regreasable, robust steel bush mounting
- Small grab dimensions thanks to direct articulation of two hydraulic cylinders between grab cross-beam and grab shells
- Stable construction due to two guide rods between grab cross-beam and grab shells with integrated cylinder protection



MZGK type

Motor-driven clamshell grab



KRÖGER

GREIFERTECHNIK

KRÖGER Greifertechnik GmbH & Co. KG

Steinheide 1–9

D-47665 Sonsbeck

Phone +49 2838 37-0

Fax +49 2838 37-39

info@kroeger-greifertechnik.de

www.kroeger-greifertechnik.de

Sales

Koblenz office:

Oberstraße 8a

D-56587 Oberraden

Phone +49 2634 940051

Fax +49 2634 940389

vertrieb@kroeger-greifertechnik.de

“Get to grips with the grab technology of tomorrow!”